

Datasheet for ABIN1495052
anti-CHRNA1 antibody (N-Term)



[Go to Product page](#)

2 Images

Overview

Quantity:	100 µg
Target:	CHRNA1
Binding Specificity:	N-Term
Reactivity:	Human, Mouse, Rat
Host:	Rabbit
Clonality:	Polyclonal
Conjugate:	This CHRNA1 antibody is un-conjugated
Application:	Western Blotting (WB), Immunohistochemistry (IHC), Immunohistochemistry (Paraffin-embedded Sections) (IHC (p))

Product Details

Immunogen:	Synthetic peptide corresponding to a sequence at the N-terminal of acetylcholine receptor alpha1, identical to the related mouse and rat sequence. Type of Immunogen: Synthetic peptide
Specificity:	Human, mouse, rat. No cross reactivity with other proteins.
Cross-Reactivity (Details):	No cross reactivity with other proteins.
Purification:	Immunoaffinity purified

Target Details

Target:	CHRNA1
---------	--------

Target Details

Alternative Name:	CHRNA1 (CHRNA1 Products)
Background:	Name/Gene ID: CHRNA1 Subfamily: Nicotinic acetylcholine receptor Family: Ion Channel Synonyms: CHRNA1, Achr-1, AChR-alpha1, ACHRD, CHNRA, ACHRA, FCCMS, SCCMS, CHRNA, CMS2A, NACHR alpha 1
Gene ID:	1134
UniProt:	P02708
Pathways:	Skeletal Muscle Fiber Development

Application Details

Application Notes:	Optimal working dilution should be determined by the investigator.
Comment:	Target Species of Antibody: Human
Restrictions:	For Research Use only

Handling

Format:	Liquid
Concentration:	Lot specific
Buffer:	5 mg BSA, 0.9 mg sodium chloride, 0.2 mg sodium phosphate, 0.05 mg Thimerosal, 0.05 mg sodium azide
Preservative:	Thimerosal (Merthiolate), Sodium azide
Precaution of Use:	This product contains Sodium azide and Thimerosal (Merthiolate): POISONOUS AND HAZARDOUS SUBSTANCES which should be handled by trained staff only.
Storage:	4 °C, -20 °C
Storage Comment:	Short term: 4°C Long term: -20°C.



Image 1.

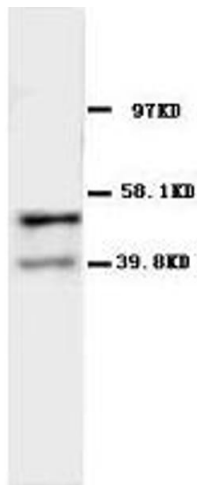


Image 2.