

Datasheet for ABIN1495055
anti-PTGS2 antibody (N-Term)



[Go to Product page](#)

2 Images

Overview

Quantity:	100 µg
Target:	PTGS2
Binding Specificity:	N-Term
Reactivity:	Human, Mouse, Rat
Host:	Rabbit
Clonality:	Polyclonal
Conjugate:	This PTGS2 antibody is un-conjugated
Application:	Western Blotting (WB), Immunohistochemistry (IHC), Immunohistochemistry (Paraffin-embedded Sections) (IHC (p))

Product Details

Immunogen:	Synthetic peptide corresponding to a sequence at the N-terminal of human COX-2, different to the related rat sequence by two amino acids. Type of Immunogen: Synthetic peptide
Specificity:	Human, mouse, rat. No cross reactivity with other proteins.
Cross-Reactivity (Details):	No cross reactivity with other proteins.
Purification:	Immunoaffinity purified

Target Details

Target:	PTGS2
---------	-------

Target Details

Alternative Name: PTGS2 / COX2 / COX-2 ([PTGS2 Products](#))

Background: Name/Gene ID: PTGS2

Synonyms: PTGS2, COX-2, Cyclooxygenase-2, COX2, Cyclooxygenase 2b, HCox-2, GRIPGHS, PGH synthase 2, PGHS-2, PHS II, PHS-2, Prostaglandin H2 synthase 2, PGG/HS, Prostaglandin G/H synthase 2

Gene ID: 5743

UniProt: [P35354](#)

Pathways: [Brown Fat Cell Differentiation](#), [Positive Regulation of fat Cell Differentiation](#)

Application Details

Application Notes: Optimal working dilution should be determined by the investigator.

Comment: Target Species of Antibody: Human

Restrictions: For Research Use only

Handling

Format: Liquid

Concentration: Lot specific

Buffer: 5 mg BSA, 0.9 mg sodium chloride, 0.2 mg sodium phosphate, 0.05 mg Thimerosal, 0.05 mg sodium azide

Preservative: Thimerosal (Merthiolate), Sodium azide

Precaution of Use: This product contains Sodium azide and Thimerosal (Merthiolate): POISONOUS AND HAZARDOUS SUBSTANCES which should be handled by trained staff only.

Storage: 4 °C, -20 °C

Storage Comment: Short term: 4°C
Long term: -20°C.

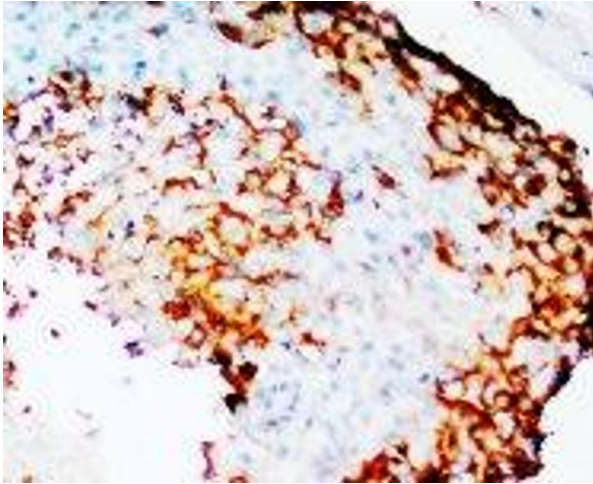
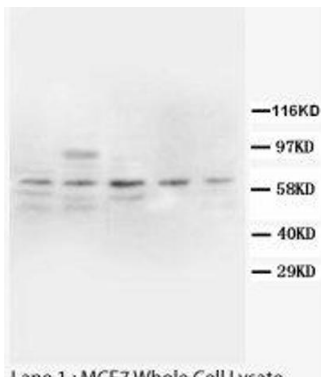


Image 1.



Lane 1 : MCF7 Whole Cell Lysate
Lane 2 : HeLa Whole Cell Lysate
Lane 3 : MM453 Whole Cell Lysat
Lane 4 : Jurkat Whole Cell Lysate
Lane 5 : colo320 Whole Cell Lysate

Image 2.