

Datasheet for ABIN1495057
anti-ERK1/2 antibody (N-Term)



[Go to Product page](#)

2 Images

Overview

Quantity:	100 µg
Target:	ERK1/2 (MAPK1/3)
Binding Specificity:	N-Term
Reactivity:	Human, Mouse, Rat
Host:	Rabbit
Clonality:	Polyclonal
Conjugate:	This ERK1/2 antibody is un-conjugated
Application:	Western Blotting (WB), Immunohistochemistry (IHC), Immunohistochemistry (Paraffin-embedded Sections) (IHC (p))

Product Details

Immunogen:	Synthetic peptide mapping at the N-terminal of the human MAPK1+3, identical to the related rat sequence. Type of Immunogen: Synthetic peptide
Specificity:	Human, mouse, rat. No cross reactivity with other proteins.
Cross-Reactivity (Details):	No cross reactivity with other proteins.
Purification:	Immunoaffinity purified

Target Details

Target:	ERK1/2 (MAPK1/3)
---------	------------------

Target Details

Alternative Name: ERK1 + ERK2 ([MAPK1/3 Products](#))

Background: Name/Gene ID: ERK1/ERK2

Synonyms: ERK1/ERK2

This antibody detects: ERK1 + ERK2

UniProt: [015264](#)

Application Details

Application Notes: Optimal working dilution should be determined by the investigator.

Comment: Target Species of Antibody: Human

Restrictions: For Research Use only

Handling

Format: Liquid

Concentration: Lot specific

Buffer: 5 mg BSA, 0.9 mg sodium chloride, 0.2 mg sodium phosphate, 0.05 mg Thimerosal, 0.05 mg sodium azide

Preservative: Thimerosal (Merthiolate), Sodium azide

Precaution of Use: This product contains Sodium azide and Thimerosal (Merthiolate): POISONOUS AND HAZARDOUS SUBSTANCES which should be handled by trained staff only.

Storage: 4 °C, -20 °C

Storage Comment: Short term: 4°C
Long term: -20°C.

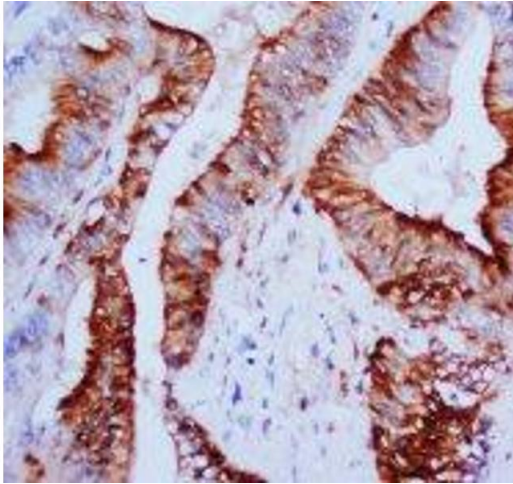


Image 1.

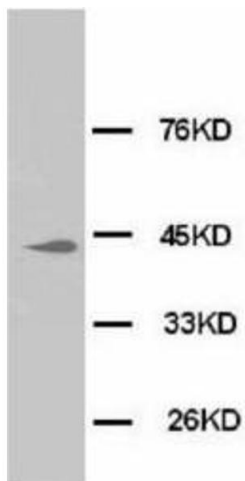


Image 2.