

Datasheet for ABIN1495063
anti-ROCK2 antibody (N-Term)



[Go to Product page](#)

2 Images

Overview

Quantity:	100 µg
Target:	ROCK2
Binding Specificity:	N-Term
Reactivity:	Human, Mouse, Rat
Host:	Rabbit
Clonality:	Polyclonal
Conjugate:	This ROCK2 antibody is un-conjugated
Application:	Western Blotting (WB), Immunohistochemistry (IHC), Immunohistochemistry (Paraffin-embedded Sections) (IHC (p))

Product Details

Immunogen:	Synthetic peptide corresponding to a sequence at the N-terminal of human ROCK2, identical to the related rat and mouse sequence. Type of Immunogen: Synthetic peptide
Specificity:	Human, mouse, rat. No cross reactivity with other proteins.
Cross-Reactivity (Details):	No cross reactivity with other proteins.
Purification:	Immunoaffinity purified

Target Details

Target:	ROCK2
---------	-------

Target Details

Alternative Name:	ROCK2 (ROCK2 Products)
Background:	Name/Gene ID: ROCK2 Subfamily: ROCK Family: Protein Kinase Synonyms: ROCK2, KIAA0619, p164 ROCK-2, Rho kinase 2, RhoA-associated kinase-2, ROCK-II, Rho kinase II, Rok beta, Rok2, RockII
Gene ID:	9475
UniProt:	O75116
Pathways:	Microtubule Dynamics , WNT Signaling , Tube Formation

Application Details

Application Notes:	Optimal working dilution should be determined by the investigator.
Comment:	Target Species of Antibody: Human
Restrictions:	For Research Use only

Handling

Format:	Liquid
Concentration:	Lot specific
Buffer:	5 mg BSA, 0.9 mg sodium chloride, 0.2 mg sodium phosphate, 0.05 mg Thimerosal, 0.05 mg sodium azide
Preservative:	Thimerosal (Merthiolate), Sodium azide
Precaution of Use:	This product contains Sodium azide and Thimerosal (Merthiolate): POISONOUS AND HAZARDOUS SUBSTANCES which should be handled by trained staff only.
Storage:	4 °C, -20 °C
Storage Comment:	Short term: 4°C Long term: -20°C.

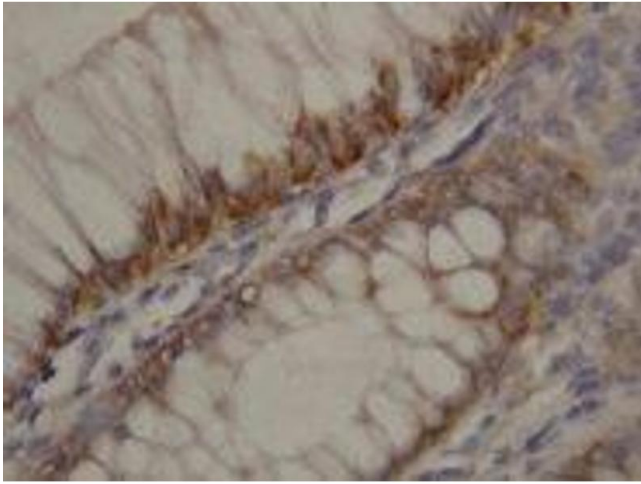


Image 1.

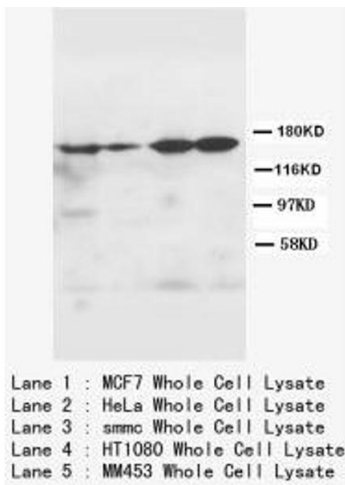


Image 2.