



[Go to Product page](#)

Datasheet for ABIN1495415
anti-KCNN4 antibody (AA 11-28)

1 Image

Overview

Quantity:	100 µg
Target:	KCNN4
Binding Specificity:	AA 11-28
Reactivity:	Human, Rat
Host:	Rabbit
Clonality:	Polyclonal
Conjugate:	This KCNN4 antibody is un-conjugated
Application:	Western Blotting (WB)

Product Details

Immunogen:	Synthetic peptide corresponding to a sequence mapping at the N-terminal of human KCNN4 (11-28 aa)' different to the rat and mouse sequence by one amino acid. Type of Immunogen: Synthetic peptide
Specificity:	Human, rat. No cross reactivity with other proteins.
Cross-Reactivity (Details):	No cross reactivity with other proteins.
Purification:	Immunoaffinity purified

Target Details

Target:	KCNN4
Alternative Name:	KCNN4 / KCa3.1 (KCNN4 Products)

Target Details

Background: Name/Gene ID: KCNN4
Subfamily: Potassium channel - calcium-activated
Family: Ion Channel

Synonyms: KCNN4, HIKCa1, HKCa4, HIK1, IK1, KCA4, HSK4, IKCA1, KCa3.1, SK4, SKCa 4,
Putative Gardos channel, SKCa4

Gene ID: 3783

UniProt: [O15554](#)

Application Details

Application Notes: Approved: WB (1 µg/mL)

Comment: Target Species of Antibody: Human

Restrictions: For Research Use only

Handling

Format: Liquid

Concentration: Lot specific

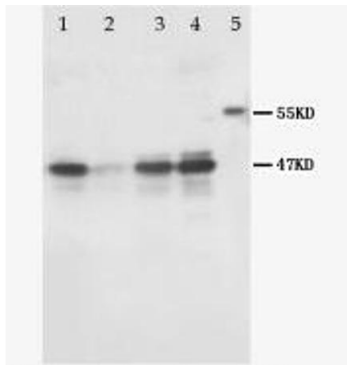
Buffer: 5 mg BSA, 0.9 mg sodium chloride, 0.2 mg sodium phosphate, 0.05 mg Thimerosal, 0.05 mg sodium azide

Preservative: Thimerosal (Merthiolate), Sodium azide

Precaution of Use: This product contains Sodium azide and Thimerosal (Merthiolate): POISONOUS AND HAZARDOUS SUBSTANCES which should be handled by trained staff only.

Storage: 4 °C, -20 °C

Storage Comment: Short term: 4°C
Long term: -20°C.



Lane 1 : Rat Heart tissue Lysate
Lane 2 : Human placenta tissue Lysate
Lane 3: MCF7 Whole Cell Lysate
Lane 4: MM453 Whole Cell Lysate
Lane 5 : Marker

Image 1.