

Datasheet for ABIN1496618
anti-NIF3L1 antibody

12 Images



[Go to Product page](#)

Overview

Quantity:	100 µL
Target:	NIF3L1
Reactivity:	Human, Mouse, Rat, Dog, Monkey
Host:	Mouse
Clonality:	Monoclonal
Conjugate:	This NIF3L1 antibody is un-conjugated
Application:	Western Blotting (WB), Immunohistochemistry (IHC), Immunofluorescence (IF), Immunohistochemistry (Paraffin-embedded Sections) (IHC (p))

Product Details

Immunogen:	Full length human recombinant protein of human NIF3L1(NP_068596) produced in HEK293T cell. Type of Immunogen: Recombinant protein
Clone:	5A7
Isotype:	IgG2a
Specificity:	Human ALS2CR1 / NIF3L1
Purification:	Protein A/G purified

Target Details

Target:	NIF3L1
---------	--------

Target Details

Alternative Name:	ALS2CR1 / NIF3L1 (NIF3L1 Products)
Background:	Name/Gene ID: NIF3L1 Synonyms: NIF3L1, CALS-7, MDS015, NIF3-like protein 1, ALS2CR1
Gene ID:	60491
NCBI Accession:	NP_068596

Application Details

Application Notes:	Approved: IF (1:100), IHC, IHC-P (1:150), WB (1:500 - 1:2000)
Comment:	Target Species of Antibody: Human
Restrictions:	For Research Use only

Handling

Format:	Liquid
Concentration:	Lot specific
Buffer:	PBS, pH 7.3, 1 % BSA, 50 % glycerol, 0.02 % sodium azide
Preservative:	Sodium azide
Precaution of Use:	This product contains Sodium azide: a POISONOUS AND HAZARDOUS SUBSTANCE which should be handled by trained staff only.
Storage:	-20 °C
Storage Comment:	Store at -20°C. Avoid freeze-thaw cycles.

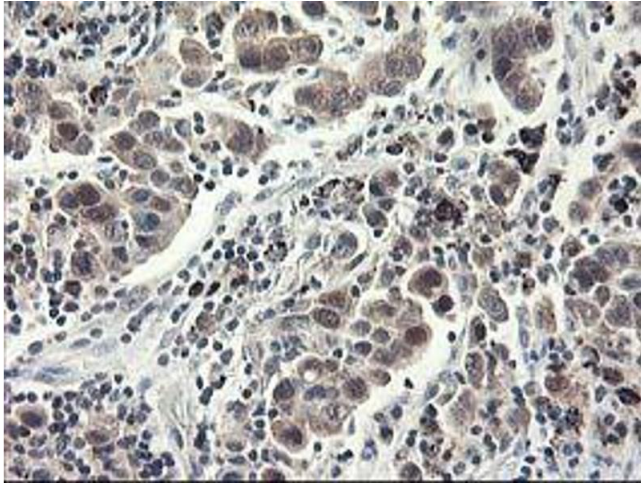


Image 1.

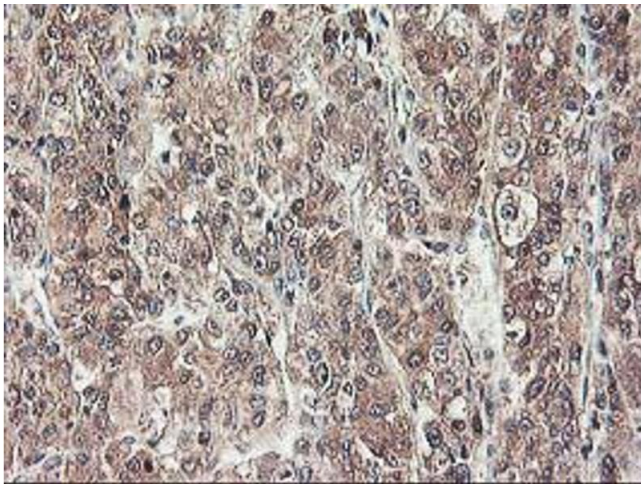


Image 2.

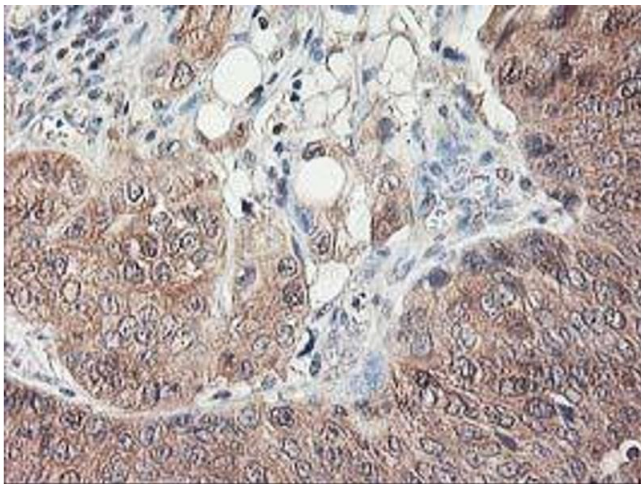


Image 3.

Please check the [product details page](#) for more images. Overall 12 images are available for ABIN1496618.