



## Datasheet for ABIN1496712 **anti-ARL1 antibody (AA 1-163)**



[Go to Product page](#)

### 1 Image

#### Overview

Quantity:	100 µL
Target:	ARL1
Binding Specificity:	AA 1-163
Reactivity:	Human
Host:	Rabbit
Clonality:	Polyclonal
Conjugate:	This ARL1 antibody is un-conjugated
Application:	Western Blotting (WB)

#### Product Details

Immunogen:	Recombinant protein fragment contain a sequence corresponding to a region within amino acids 1 and 163 (P40616) of ARL1. Percent identity by BLAST analysis: Human (100%), Porcine, Bovine (99%), Mouse, Rat (98%), Chicken (96%), Zebrafish (95%).  Type of Immunogen: Recombinant protein
Isotype:	IgG
Specificity:	Human ARL1
Predicted Reactivity:	Percent identity by BLAST analysis: Human (100%) Porcine, Bovine (99%) Mouse, Rat (98%) Chicken (96%) Zebrafish (95%).
Purification:	Immunoaffinity purified

## Target Details

---

Target:	ARL1
Alternative Name:	ARL1 ( <a href="#">ARL1 Products</a> )
Background:	Name/Gene ID: ARL1 Family: Ras GTPase superfamily IPR001806  Synonyms: ARL1, ARFL1, ADP-ribosylation factor-like 1
Gene ID:	400
UniProt:	<a href="#">P40616</a>

## Application Details

---

Application Notes:	Approved: WB (1:500 - 1:3000)  Usage: Suggested starting dilutions are as follows: Western blot: 1:500-1:3000. Not yet tested in other applications. Optimal working dilutions should be determined experimentally by the end user.
Comment:	Target Species of Antibody: Human
Restrictions:	For Research Use only

## Handling

---

Format:	Liquid
Concentration:	Lot specific
Buffer:	PBS, pH 7, 1 % BSA, 20 % Glycerol, 0.01 % Thimerosal
Preservative:	Thimerosal (Merthiolate)
Precaution of Use:	This product contains Thimerosal (Merthiolate): a POISONOUS AND HAZARDOUS SUBSTANCE which should be handled by trained staff only.
Handling Advice:	Avoid freeze-thaw cycles.
Storage:	-20 °C
Storage Comment:	Aliquot and freeze at -20°C. Avoid freeze-thaw cycles.

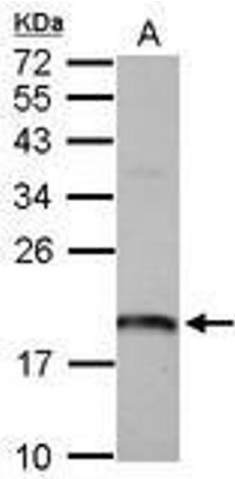


Image 1.