



Datasheet for ABIN1496778
anti-ATP6V1F antibody



[Go to Product page](#)

3 Images

Overview

Quantity:	100 µL
Target:	ATP6V1F
Reactivity:	Human, Rat, Dog, Monkey
Host:	Mouse
Clonality:	Monoclonal
Conjugate:	This ATP6V1F antibody is un-conjugated
Application:	Western Blotting (WB), Flow Cytometry (FACS)

Product Details

Immunogen:	Full length human recombinant protein of human ATP6V1F (NP_004222) produced in E. coli. Type of Immunogen: Recombinant protein
Clone:	6C11
Isotype:	IgG1
Specificity:	Human ATP6V1F
Purification:	Protein A/G purified

Target Details

Target:	ATP6V1F
Alternative Name:	ATP6V1F (ATP6V1F Products)

Target Details

Background:	Name/Gene ID: ATP6V1F Subfamily: ATPase - V type Family: Transporter Synonyms: ATP6V1F, ATPase, vacuolar, 14 kD, V-ATPase subunit F, Vacuolar proton pump F subunit, Vma7, V-ATPase F subunit, ATP6S14, Vacuolar proton pump subunit F, V-ATPase 14 kDa subunit, V-type proton ATPase subunit F, VATF
Gene ID:	9296
NCBI Accession:	NP_004222
Pathways:	Transition Metal Ion Homeostasis , Proton Transport

Application Details

Application Notes:	Approved: Flo (1:100), WB (1:200 - 1:500)
Comment:	Target Species of Antibody: Human
Restrictions:	For Research Use only

Handling

Format:	Liquid
Concentration:	Lot specific
Buffer:	PBS, pH 7.3, 1 % BSA, 50 % glycerol, 0.02 % sodium azide
Preservative:	Sodium azide
Precaution of Use:	This product contains Sodium azide: a POISONOUS AND HAZARDOUS SUBSTANCE which should be handled by trained staff only.
Storage:	-20 °C
Storage Comment:	Store at -20°C. Avoid freeze-thaw cycles.

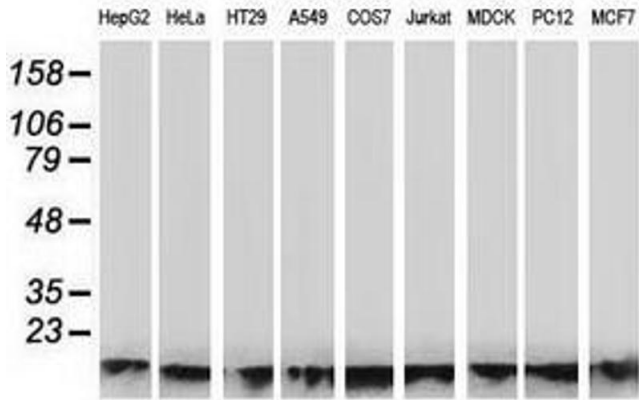
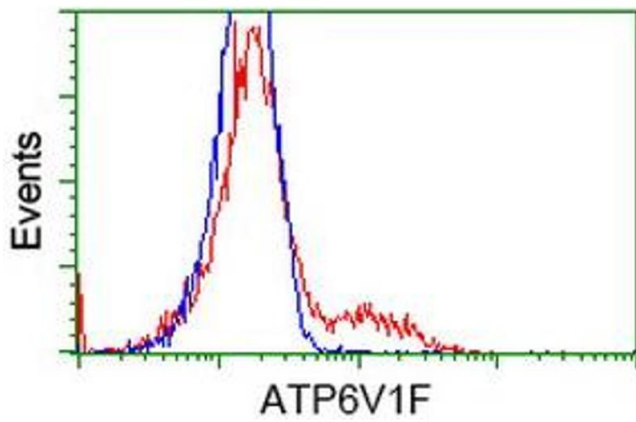
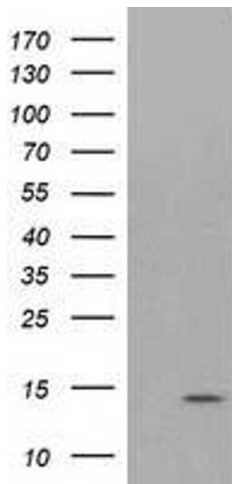


Image 1.



Flow Cytometry
Image 2.



Western Blotting
Image 3.