



Datasheet for ABIN1496850
anti-BCL10 antibody



[Go to Product page](#)

2 Images

Overview

Quantity:	100 µL
Target:	BCL10
Reactivity:	Human, Mouse
Host:	Mouse
Clonality:	Monoclonal
Conjugate:	This BCL10 antibody is un-conjugated
Application:	Western Blotting (WB)

Product Details

Immunogen:	Full length human recombinant protein of human BCL10 (NP_003912) produced in HEK293T cell. Type of Immunogen: Recombinant protein
Clone:	3C4
Isotype:	IgG2a
Specificity:	Human BCL10
Purification:	Protein A/G purified

Target Details

Target:	BCL10
Alternative Name:	BCL10 / BCL-10 (BCL10 Products)

Target Details

Background:	Name/Gene ID: BCL10 Family: Apoptosis Synonyms: BCL10, Bcl-10, B-cell CLL/lymphoma 10, B-cell lymphoma/leukemia 10, CARMEN, CARD-like apoptotic protein, CCARMEN, C-E10, CIPER, Cellular-E10, HCLAP, Cellular homolog of vCARMEN, CLAP, ME10
Gene ID:	8915
NCBI Accession:	NP_003912
UniProt:	O95999
Pathways:	TCR Signaling , Fc-epsilon Receptor Signaling Pathway , Activation of Innate immune Response , Positive Regulation of Immune Effector Process , Production of Molecular Mediator of Immune Response , Tube Formation , Positive Regulation of Endopeptidase Activity , BCR Signaling , Ubiquitin Proteasome Pathway , S100 Proteins

Application Details

Application Notes:	Approved: WB (1:2000)
Comment:	Target Species of Antibody: Human
Restrictions:	For Research Use only

Handling

Format:	Liquid
Concentration:	Lot specific
Buffer:	PBS, pH 7.3, 1 % BSA, 50 % glycerol, 0.02 % sodium azide
Preservative:	Sodium azide
Precaution of Use:	This product contains Sodium azide: a POISONOUS AND HAZARDOUS SUBSTANCE which should be handled by trained staff only.
Handling Advice:	Minimize freezing and thawing.
Storage:	-20 °C
Storage Comment:	Store at -20°C. Avoid freeze-thaw cycles.

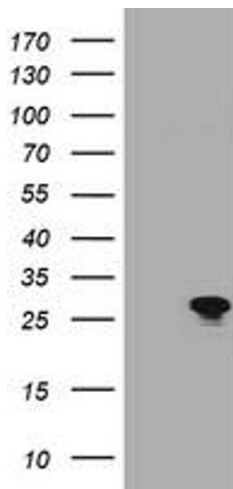


Image 1.

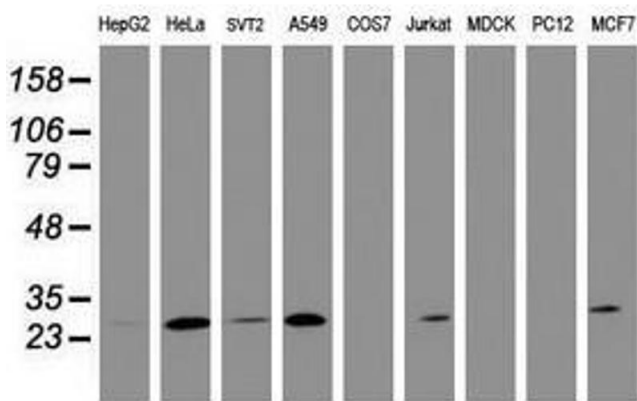


Image 2.