



[Go to Product page](#)

Datasheet for ABIN1496855  
**anti-BCL7C antibody (AA 1-215)**

2 Images

### Overview

Quantity:	100 µL
Target:	BCL7C
Binding Specificity:	AA 1-215
Reactivity:	Human
Host:	Rabbit
Clonality:	Polyclonal
Conjugate:	This BCL7C antibody is un-conjugated
Application:	Western Blotting (WB), Immunohistochemistry (IHC), Immunohistochemistry (Paraffin-embedded Sections) (IHC (p))

### Product Details

Immunogen:	Recombinant fragment corresponding to a region within amino acids 1 and 215 of BCL7C (SwissProt Q8WUZ0). Percent identity by BLAST analysis: Human (100%), Bovine (98%), Mouse (91%).  Type of Immunogen: Recombinant protein
Isotype:	IgG
Specificity:	Human BCL7C
Predicted Reactivity:	Percent identity by BLAST analysis: Human (100%) Bovine (98%) Mouse (91%).
Purification:	Immunoaffinity purified

## Target Details

---

Target:	BCL7C
Alternative Name:	BCL7C ( <a href="#">BCL7C Products</a> )
Background:	Name/Gene ID: BCL7C Family: Cancer  Synonyms: BCL7C, B-cell CLL/lymphoma 7C
Gene ID:	9274
UniProt:	<a href="#">Q8WUZO</a>

## Application Details

---

Application Notes:	Approved: IHC, IHC-P (1:100 - 1:1000), WB (1:500 - 1:3000)  Usage: Suggested starting dilutions are as follows: Western blot: 1:500-1:3000, IHC-Paraffin: 1:100-1:1000 [suggested antigen retrieval using heat mediated 10 mM Citrate buffer ( pH 6.0) or Tris-EDTA buffer ( pH 8.0)]. Not yet tested in other applications. Optimal working dilutions should be determined experimentally by the end user.
Comment:	Target Species of Antibody: Human
Restrictions:	For Research Use only

## Handling

---

Format:	Liquid
Concentration:	Lot specific
Buffer:	PBS, pH 7, 1 % BSA, 20 % Glycerol, 0.01 % Thimerosal
Preservative:	Thimerosal (Merthiolate)
Precaution of Use:	This product contains Thimerosal (Merthiolate): a POISONOUS AND HAZARDOUS SUBSTANCE which should be handled by trained staff only.
Handling Advice:	Avoid freeze-thaw cycles.
Storage:	-20 °C
Storage Comment:	Aliquot and freeze at -20°C. Avoid freeze-thaw cycles.

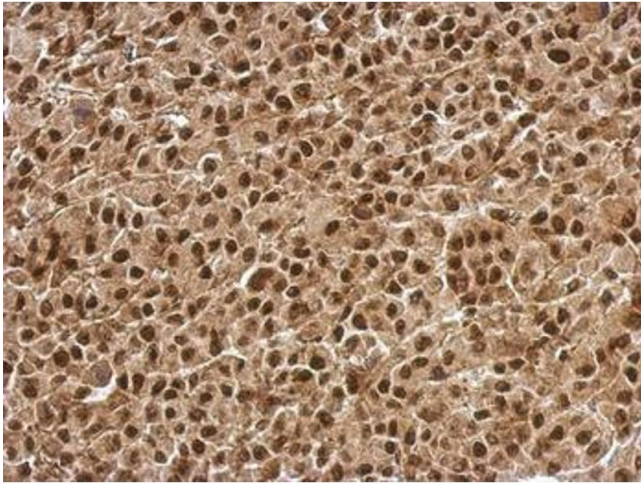


Image 1.

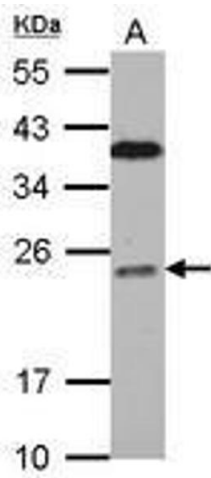


Image 2.