



[Go to Product page](#)

Datasheet for ABIN1496868  
**anti-Beclin 1 antibody**

7 Images

Overview

Quantity:	100 µL
Target:	Beclin 1 (BECN1)
Reactivity:	Human, Rat, Dog
Host:	Mouse
Clonality:	Monoclonal
Conjugate:	This Beclin 1 antibody is un-conjugated
Application:	Western Blotting (WB), Immunohistochemistry (IHC), Immunofluorescence (IF), Flow Cytometry (FACS), Immunohistochemistry (Paraffin-embedded Sections) (IHC (p))

Product Details

Immunogen:	Full length human recombinant protein of human BECN1 (NP_003757) produced in HEK293T cell.  Type of Immunogen: Recombinant protein
Clone:	1F1
Isotype:	IgG2a
Specificity:	Human Beclin 1
Purification:	Protein A/G purified

Target Details

Target:	Beclin 1 (BECN1)
---------	------------------

## Target Details

---

Alternative Name:	<a href="#">BECN1 / Beclin-1 (BECN1 Products)</a>
Background:	Name/Gene ID: BECN1  Synonyms: BECN1, ATG6, Beclin 1, Beclin 1, autophagy related, Beclin1, GT197, Protein GT197, VPS30, Beclin-1
Gene ID:	8678
NCBI Accession:	<a href="#">NP_003757</a>
UniProt:	<a href="#">Q14457</a>
Pathways:	<a href="#">Autophagy</a>

## Application Details

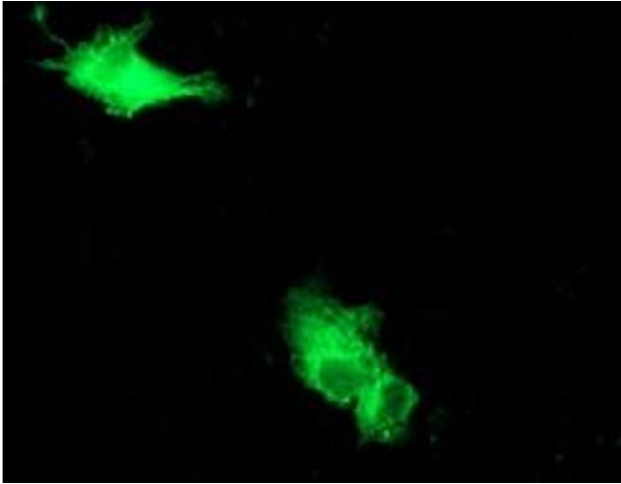
---

Application Notes:	Approved: Flo (1:100), IF (1:100), IHC, IHC-P (1:150), WB (1:500 - 1:2000)
Comment:	Target Species of Antibody: Human
Restrictions:	For Research Use only

## Handling

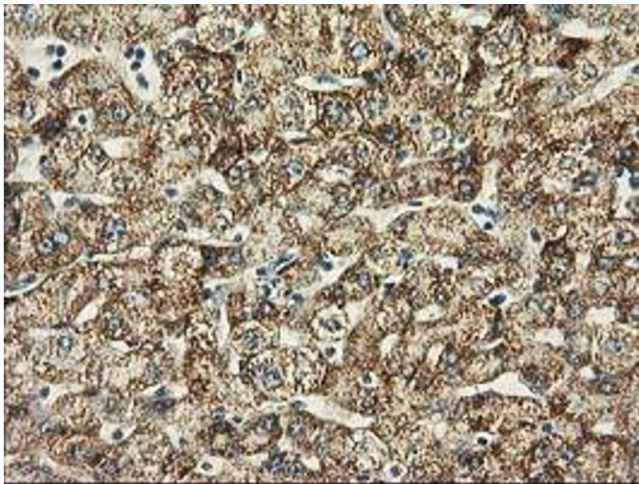
---

Format:	Liquid
Concentration:	Lot specific
Buffer:	PBS, pH 7.3, 1 % BSA, 50 % glycerol, 0.02 % sodium azide
Preservative:	Sodium azide
Precaution of Use:	This product contains Sodium azide: a POISONOUS AND HAZARDOUS SUBSTANCE which should be handled by trained staff only.
Handling Advice:	Minimize freezing and thawing.
Storage:	-20 °C
Storage Comment:	Store at -20°C. Avoid freeze-thaw cycles.



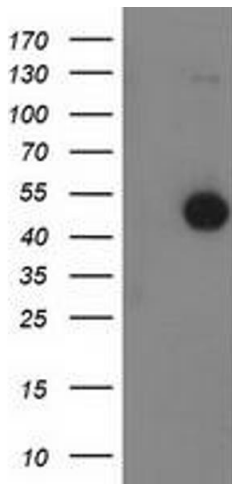
### Immunofluorescence

Image 1.



### Immunohistochemistry

Image 2.



### Western Blotting

Image 3.

Please check the [product details page](#) for more images. Overall 7 images are available for ABIN1496868.