



[Go to Product page](#)

Datasheet for ABIN1496921
anti-BIN2 antibody (AA 1-239)

1 Image

Overview

Quantity:	100 µL
Target:	BIN2
Binding Specificity:	AA 1-239
Reactivity:	Human
Host:	Rabbit
Clonality:	Polyclonal
Application:	Western Blotting (WB)

Product Details

Immunogen: Recombinant fragment corresponding to a region within amino acids 1 and 239 of BIN2 (SwissProt Q9UBW5). Percent identity by BLAST analysis: Human (100%), Bovine (95%).

Type of Immunogen: Recombinant protein

Isotype: IgG

Specificity: Human BIN2

Predicted Reactivity: Percent identity by BLAST analysis: Human (100%) Bovine (95%).

Purification: Immunoaffinity purified

Target Details

Target: BIN2

Alternative Name: BIN2 ([BIN2 Products](#))

Target Details

Background:	Name/Gene ID: BIN2 Synonyms: BIN2, BRAP1, BRAP-1, Bridging integrator 2, Bridging integrator-2
Gene ID:	51411
UniProt:	Q9UBW5

Application Details

Application Notes:	Approved: WB (1:500 - 1:3000) Usage: Suggested starting dilutions are as follows: Western blot: 1:500-1:3000. Not yet tested in other applications. Optimal working dilutions should be determined experimentally by the end user.
Comment:	Target Species of Antibody: Human
Restrictions:	For Research Use only

Handling

Format:	Liquid
Concentration:	Lot specific
Buffer:	0.1 M Tris-glycine, pH 7, 20 % Glycerol, 0.01 % Thimerosal
Preservative:	Thimerosal (Merthiolate)
Precaution of Use:	This product contains Thimerosal (Merthiolate): a POISONOUS AND HAZARDOUS SUBSTANCE which should be handled by trained staff only.
Handling Advice:	Avoid freeze-thaw cycles.
Storage:	-20 °C
Storage Comment:	Aliquot and freeze at -20°C. Avoid freeze-thaw cycles.

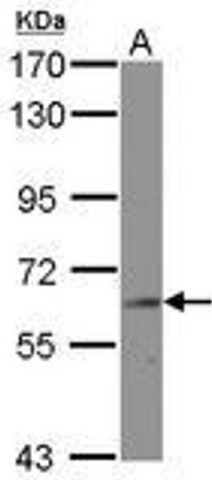


Image 1.