



[Go to Product page](#)

Datasheet for ABIN1496922

anti-BIN3 antibody

5 Images

Overview

Quantity:	100 µL
Target:	BIN3
Reactivity:	Human, Rat, Dog, Monkey
Host:	Mouse
Clonality:	Monoclonal
Conjugate:	This BIN3 antibody is un-conjugated
Application:	Western Blotting (WB), Flow Cytometry (FACS), Immunofluorescence (IF), Immunohistochemistry (IHC), Immunohistochemistry (Paraffin-embedded Sections) (IHC (p))

Product Details

Immunogen:	Full length human recombinant protein of human BIN3 (NP_061158) produced in HEK293T cell. Type of Immunogen: Recombinant protein
Clone:	5E3
Isotype:	IgG1
Specificity:	Human BIN3
Purification:	Protein A/G purified

Target Details

Target:	BIN3
Alternative Name:	BIN3 (BIN3 Products)

Target Details

Background: Name/Gene ID: BIN3
Synonyms: BIN3, Bridging integrator 3

Gene ID: 55909

NCBI Accession: [NP_061158](#)

UniProt: [Q9NQY0](#)

Application Details

Application Notes: Approved: Flo (1:100), IF (1:100), IHC, IHC-P (1:150), WB (1:500 - 1:2000)

Comment: Target Species of Antibody: Human

Restrictions: For Research Use only

Handling

Format: Liquid

Concentration: Lot specific

Buffer: PBS, pH 7.3, 1 % BSA, 50 % glycerol, 0.02 % sodium azide

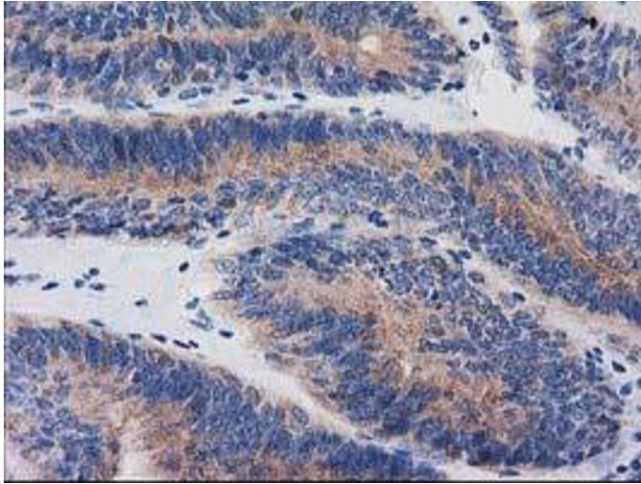
Preservative: Sodium azide

Precaution of Use: This product contains Sodium azide: a POISONOUS AND HAZARDOUS SUBSTANCE which should be handled by trained staff only.

Handling Advice: Minimize freezing and thawing.

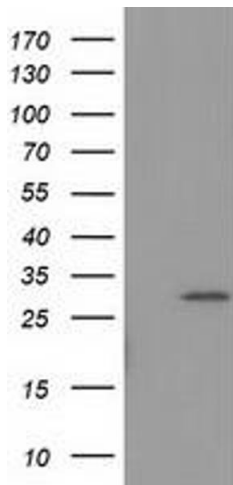
Storage: -20 °C

Storage Comment: Store at -20°C. Avoid freeze-thaw cycles.



Immunohistochemistry

Image 1.



Western Blotting

Image 2.

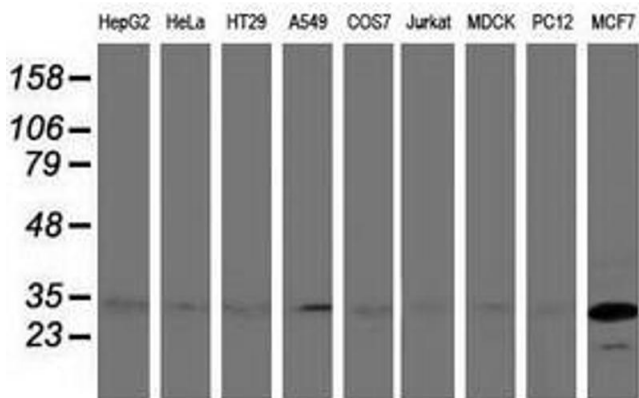


Image 3.

Please check the [product details page](#) for more images. Overall 5 images are available for ABIN1496922.