



[Go to Product page](#)

Datasheet for ABIN1496967
anti-BRIX1 antibody (AA 34-250)

1 Image

Overview

Quantity:	100 µL
Target:	BRIX1
Binding Specificity:	AA 34-250
Reactivity:	Human, Cow
Host:	Rabbit
Clonality:	Polyclonal
Conjugate:	This BRIX1 antibody is un-conjugated
Application:	Western Blotting (WB)

Product Details

Immunogen:	Recombinant fragment corresponding to a region within amino acids 34 and 250 of BXDC2 (SwissProt Q8TDN6). Percent identity by BLAST analysis: Human, Bovine (100%), Mouse (98%), Xenopus (88%). Type of Immunogen: Recombinant protein
Isotype:	IgG
Specificity:	Human BRIX1 / BXDC2
Predicted Reactivity:	Percent identity by BLAST analysis: Human, Bovine (100%) Mouse (98%) Xenopus (88%).
Purification:	Immunoaffinity purified

Target Details

Target:	BRIX1
Alternative Name:	BRIX1 (BRIX1 Products)
Background:	Name/Gene ID: BRIX1 Synonyms: BRIX1, Brix domain containing 2, BRIX, BXDC2
Gene ID:	55299
UniProt:	Q8TDN6

Application Details

Application Notes:	Approved: WB (1:500 - 1:3000) Usage: Suggested starting dilutions are as follows: Western blot: 1:500-1:3000. Not yet tested in other applications. Optimal working dilutions should be determined experimentally by the end user.
Comment:	Target Species of Antibody: Human
Restrictions:	For Research Use only

Handling

Format:	Liquid
Concentration:	Lot specific
Buffer:	0.1 M Tris-glycine, pH 7, 20 % Glycerol, 0.01 % Thimerosal
Preservative:	Thimerosal (Merthiolate)
Precaution of Use:	This product contains Thimerosal (Merthiolate): a POISONOUS AND HAZARDOUS SUBSTANCE which should be handled by trained staff only.
Handling Advice:	Avoid freeze-thaw cycles.
Storage:	-20 °C
Storage Comment:	Aliquot and freeze at -20°C. Avoid freeze-thaw cycles.

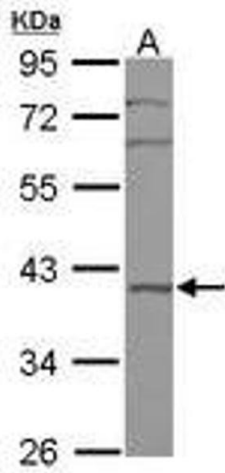


Image 1.