



Datasheet for ABIN1496968
anti-BTBD16 antibody (AA 1-255)



[Go to Product page](#)

1 Image

Overview

Quantity:	100 µL
Target:	BTBD16
Binding Specificity:	AA 1-255
Reactivity:	Human
Host:	Rabbit
Clonality:	Polyclonal
Conjugate:	This BTBD16 antibody is un-conjugated
Application:	Western Blotting (WB)

Product Details

Immunogen:	Recombinant fragment corresponding to a region within amino acids 1 and 255 of BTBD16 (SwissProt Q32M84). Percent identity by BLAST analysis: Type of Immunogen: Recombinant protein
Isotype:	IgG
Specificity:	Human BTBD16
Predicted Reactivity:	Percent identity by BLAST analysis:
Purification:	Immunoaffinity purified

Target Details

Target:	BTBD16
---------	--------

Target Details

Alternative Name: BTBD16 ([BTBD16 Products](#))

Background: Name/Gene ID: BTBD16

Synonyms: BTBD16, BTB (POZ) domain containing 16, Em:AC061711.1, C10orf87

Gene ID: 118663

UniProt: [Q32M84](#)

Application Details

Application Notes: Approved: WB (1:500 - 1:3000)

Usage: Suggested starting dilutions are as follows: Western blot: 1:500-1:3000. Not yet tested in other applications. Optimal working dilutions should be determined experimentally by the end user.

Comment: Target Species of Antibody: Human

Restrictions: For Research Use only

Handling

Format: Liquid

Concentration: Lot specific

Buffer: 0.1 M Tris-glycine, pH 7, 20 % Glycerol, 0.01 % Thimerosal

Preservative: Thimerosal (Merthiolate)

Precaution of Use: This product contains Thimerosal (Merthiolate): a POISONOUS AND HAZARDOUS SUBSTANCE which should be handled by trained staff only.

Handling Advice: Avoid freeze-thaw cycles.

Storage: -20 °C

Storage Comment: Aliquot and freeze at -20°C. Avoid freeze-thaw cycles.

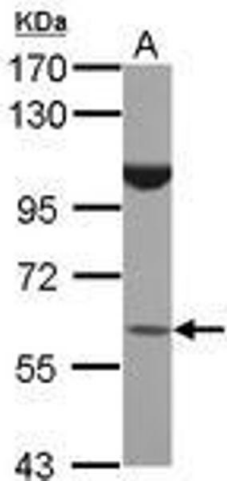


Image 1.