



Datasheet for ABIN1496980

## anti-BTLA antibody



[Go to Product page](#)

### 3 Images

#### Overview

Quantity:	100 µL
Target:	BTLA
Reactivity:	Human
Host:	Mouse
Clonality:	Monoclonal
Conjugate:	This BTLA antibody is un-conjugated
Application:	Western Blotting (WB), Flow Cytometry (FACS), Immunofluorescence (IF)

#### Product Details

Immunogen:	Full length human recombinant protein of human BTLA(NP_861445) produced in HEK293T cell. Type of Immunogen: Recombinant protein
Clone:	2G2
Isotype:	IgG2b
Specificity:	Human BTLA
Purification:	Protein A/G purified

#### Target Details

Target:	BTLA
Alternative Name:	BTLA / CD272 ( <a href="#">BTLA Products</a> )

## Target Details

---

Background:	Name/Gene ID: BTLA  Synonyms: BTLA, BTLA1, B and T lymphocyte associated, CD272, B and T lymphocyte attenuator, B- and T-lymphocyte attenuator, CD272 antigen
Gene ID:	151888
NCBI Accession:	<a href="#">NP_861445</a>
UniProt:	<a href="#">Q7Z6A9</a>
Pathways:	<a href="#">Cancer Immune Checkpoints</a>

## Application Details

---

Application Notes:	Approved: Flo (1:100), IF (1:100), WB (1:2000)
Comment:	Target Species of Antibody: Human
Restrictions:	For Research Use only

## Handling

---

Format:	Liquid
Concentration:	Lot specific
Buffer:	PBS, pH 7.3, 1 % BSA, 50 % glycerol, 0.02 % sodium azide
Preservative:	Sodium azide
Precaution of Use:	This product contains Sodium azide: a POISONOUS AND HAZARDOUS SUBSTANCE which should be handled by trained staff only.
Handling Advice:	Minimize freezing and thawing.
Storage:	-20 °C
Storage Comment:	Store at -20°C. Avoid freeze-thaw cycles.

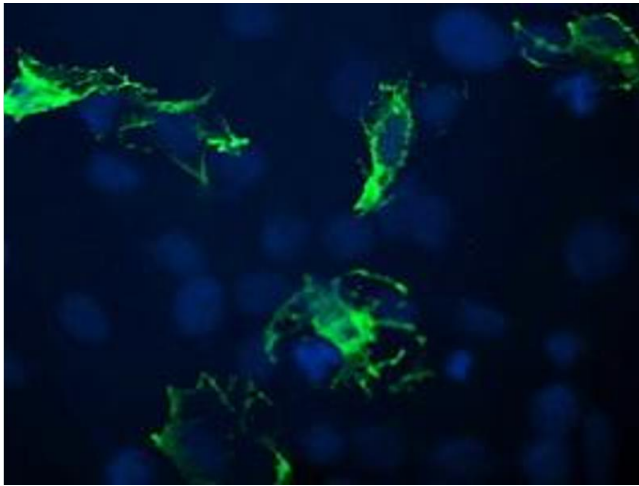


Image 1.

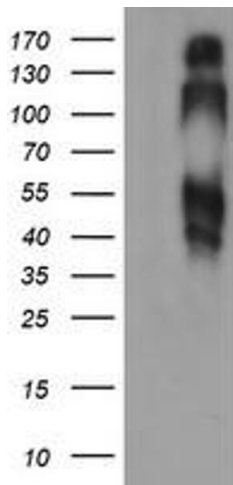


Image 2.

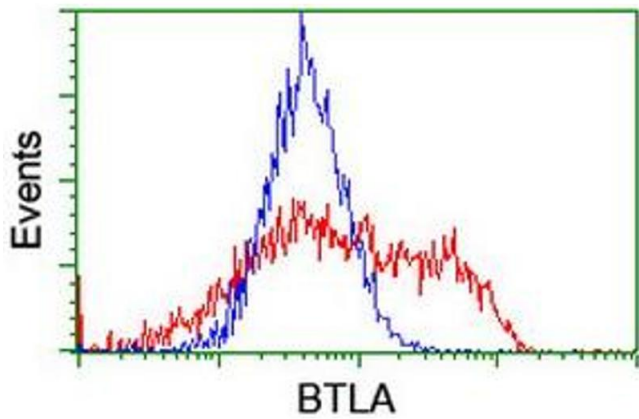


Image 3.