



Datasheet for ABIN1497030
anti-MAB21L3 antibody



[Go to Product page](#)

4 Images

Overview

Quantity:	100 µL
Target:	MAB21L3
Reactivity:	Human
Host:	Mouse
Clonality:	Monoclonal
Conjugate:	This MAB21L3 antibody is un-conjugated
Application:	Western Blotting (WB), Flow Cytometry (FACS), Immunofluorescence (IF)

Product Details

Immunogen:	Full length human recombinant protein of human C1orf161 (NP_689580) produced in HEK293T cell. Type of Immunogen: Recombinant protein
Clone:	2A3
Isotype:	IgG1
Specificity:	Human C1orf161
Purification:	Protein A/G purified

Target Details

Target:	MAB21L3
Alternative Name:	MAB21L3 / C1orf161 (MAB21L3 Products)

Target Details

Background:	Name/Gene ID: MAB21L3 Synonyms: MAB21L3, Protein mab-21-like 3, RP5-1185H19.1, C1orf161, Mab-21-like 3 (C. elegans)
Gene ID:	126868
NCBI Accession:	NP_689580
UniProt:	Q8N8X9

Application Details

Application Notes:	Approved: Flo (1:100), IF (1:100), WB (1:500)
Comment:	Target Species of Antibody: Human
Restrictions:	For Research Use only

Handling

Format:	Liquid
Concentration:	Lot specific
Buffer:	PBS, pH 7.3, 1 % BSA, 50 % glycerol, 0.02 % sodium azide
Preservative:	Sodium azide
Precaution of Use:	This product contains Sodium azide: a POISONOUS AND HAZARDOUS SUBSTANCE which should be handled by trained staff only.
Handling Advice:	Minimize freezing and thawing.
Storage:	-20 °C
Storage Comment:	Store at -20°C. Avoid freeze-thaw cycles.

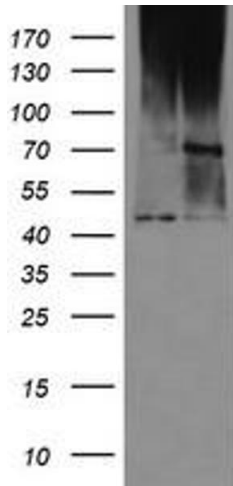


Image 1.

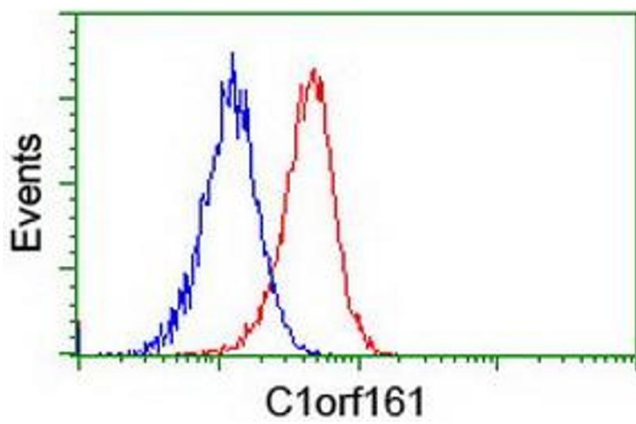


Image 2.

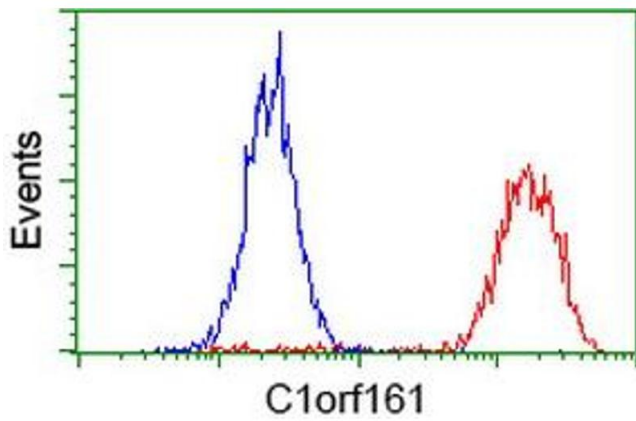


Image 3.

Please check the [product details page](#) for more images. Overall 4 images are available for ABIN1497030.