

Datasheet for ABIN1497033
anti-C1ORF50 antibody



[Go to Product page](#)

17 Images

Overview

| | |
|--------------|---|
| Quantity: | 100 µL |
| Target: | C1ORF50 |
| Reactivity: | Human, Mouse, Dog, Monkey |
| Host: | Mouse |
| Clonality: | Monoclonal |
| Conjugate: | This C1ORF50 antibody is un-conjugated |
| Application: | Western Blotting (WB), Flow Cytometry (FACS), Immunofluorescence (IF), Immunohistochemistry (IHC), Immunohistochemistry (Paraffin-embedded Sections) (IHC (p)) |

Product Details

| | |
|---------------|--|
| Immunogen: | Full length human recombinant protein of human (NP_077002) produced in HEK293T cell. Type of Immunogen: Recombinant protein |
| Clone: | 1C6 |
| Isotype: | IgG2a |
| Specificity: | Human C1orf50 |
| Purification: | Protein A/G purified |

Target Details

| | |
|-------------------|--|
| Target: | C1ORF50 |
| Alternative Name: | C1orf50 (C1ORF50 Products) |

Target Details

| | |
|-----------------|--|
| Background: | Name/Gene ID: C1orf50 |
| | Synonyms: C1orf50 |
| Gene ID: | 79078 |
| NCBI Accession: | NP_077002 |
| Pathways: | SARS-CoV-2 Protein Interactome |

Application Details

| | |
|--------------------|--|
| Application Notes: | Approved: Flo (1:100), IF (1:100), IHC, IHC-P (1:150), WB (1:500 - 1:1000) |
| Comment: | Target Species of Antibody: Human |
| Restrictions: | For Research Use only |

Handling

| | |
|--------------------|--|
| Format: | Liquid |
| Concentration: | Lot specific |
| Buffer: | PBS, pH 7.3, 1 % BSA, 50 % glycerol, 0.02 % sodium azide |
| Preservative: | Sodium azide |
| Precaution of Use: | This product contains Sodium azide: a POISONOUS AND HAZARDOUS SUBSTANCE which should be handled by trained staff only. |
| Storage: | -20 °C |
| Storage Comment: | Store at -20°C. Avoid freeze-thaw cycles. |

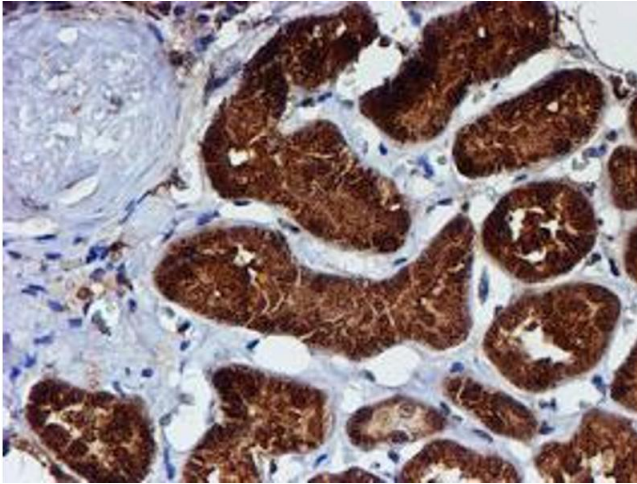


Image 1.

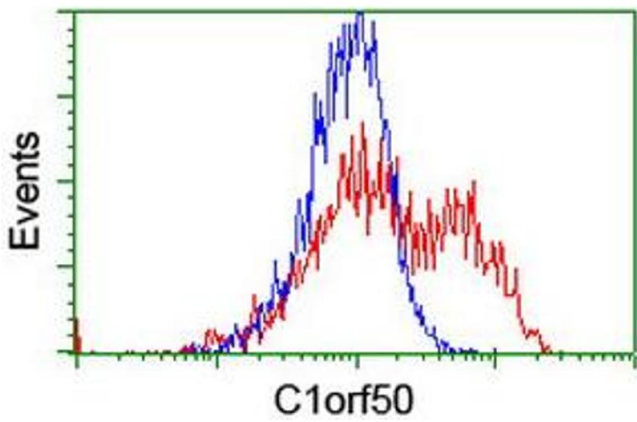


Image 2.

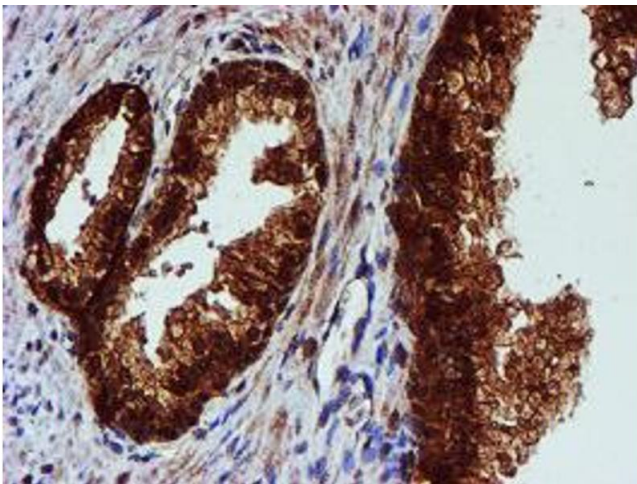


Image 3.

Please check the [product details page](#) for more images. Overall 17 images are available for ABIN1497033.