

Datasheet for ABIN1497050  
**anti-LDAH/C2orf43 antibody**



[Go to Product page](#)

2 Images

Overview

Quantity:	100 µL
Target:	LDAH/C2orf43 (LDAH)
Reactivity:	Human
Host:	Mouse
Clonality:	Monoclonal
Conjugate:	This LDAH/C2orf43 antibody is un-conjugated
Application:	Western Blotting (WB), Flow Cytometry (FACS)

Product Details

Immunogen:	Full length human recombinant protein of human C2orf43(NP_068744) produced in HEK293T cell. Type of Immunogen: Recombinant protein
Clone:	2G9
Isotype:	IgG1
Specificity:	Human C2orf43
Purification:	Protein A/G purified

Target Details

Target:	LDAH/C2orf43 (LDAH)
Alternative Name:	LDAH ( <a href="#">LDAH Products</a> )

## Target Details

---

Background:	Name/Gene ID: LDAH  Synonyms: LDAH, UPF0554 protein C2orf43, C2orf43
Gene ID:	60526
NCBI Accession:	<a href="#">NP_068744</a>

## Application Details

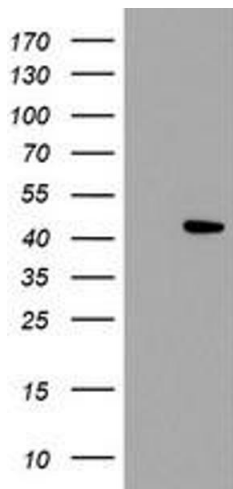
---

Application Notes:	Approved: Flo (1:100), WB (1:2000)
Comment:	Target Species of Antibody: Human
Restrictions:	For Research Use only

## Handling

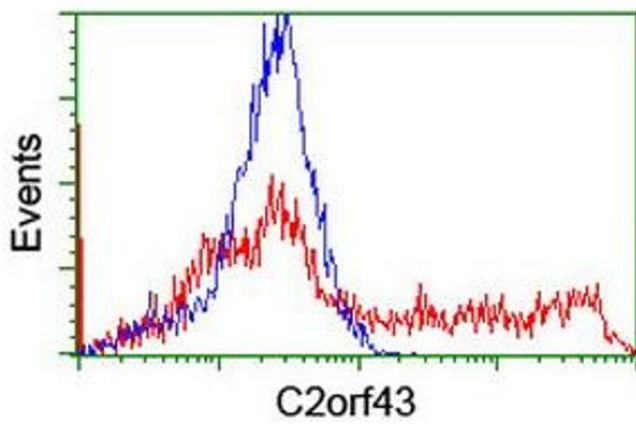
---

Format:	Liquid
Concentration:	Lot specific
Buffer:	PBS, pH 7.3, 1 % BSA, 50 % glycerol, 0.02 % sodium azide
Preservative:	Sodium azide
Precaution of Use:	This product contains Sodium azide: a POISONOUS AND HAZARDOUS SUBSTANCE which should be handled by trained staff only.
Storage:	-20 °C
Storage Comment:	Store at -20°C. Avoid freeze-thaw cycles.



### Western Blotting

Image 1.



### Flow Cytometry

Image 2.