

Datasheet for ABIN1497056
anti-KLHL12 antibody (AA 81-341)



[Go to Product page](#)

1 Image

Overview

Quantity:	100 µL
Target:	KLHL12
Binding Specificity:	AA 81-341
Reactivity:	Human
Host:	Rabbit
Clonality:	Polyclonal
Conjugate:	This KLHL12 antibody is un-conjugated
Application:	Western Blotting (WB)

Product Details

Immunogen:	Recombinant fragment corresponding to a region within amino acids 81 and 341 of C3IP1 (SwissProt Q53G59). Percent identity by BLAST analysis: Human (100%), Mouse, Rat (99%), Xenopus (91%), Zebrafish (87%). Type of Immunogen: Recombinant protein
Isotype:	IgG
Specificity:	Human C3IP1
Predicted Reactivity:	Percent identity by BLAST analysis: Human (100%) Mouse, Rat (99%) Xenopus (91%) Zebrafish (87%).
Purification:	Immunoaffinity purified

Target Details

Target:	KLHL12
Alternative Name:	KLHL12 (KLHL12 Products)
Background:	Name/Gene ID: KLHL12 Synonyms: KLHL12, C3IP1, DKIR, HDKIR, Kelch-like 12 (Drosophila), Kelch-like protein C3IP1, Kelch-like protein 12, CUL3-interacting protein 1, DKIR homolog
Gene ID:	59349
UniProt:	Q53G59

Application Details

Application Notes:	Approved: WB (1:500 - 1:3000) Usage: Suggested starting dilutions are as follows: Western blot: 1:500-1:3000. Not yet tested in other applications. Optimal working dilutions should be determined experimentally by the end user.
Comment:	Target Species of Antibody: Human
Restrictions:	For Research Use only

Handling

Format:	Liquid
Concentration:	Lot specific
Buffer:	PBS, pH 7, 1 % BSA, 20 % Glycerol, 0.01 % Thimerosal
Preservative:	Thimerosal (Merthiolate)
Precaution of Use:	This product contains Thimerosal (Merthiolate): a POISONOUS AND HAZARDOUS SUBSTANCE which should be handled by trained staff only.
Handling Advice:	Avoid freeze-thaw cycles.
Storage:	-20 °C
Storage Comment:	Aliquot and freeze at -20°C. Avoid freeze-thaw cycles.

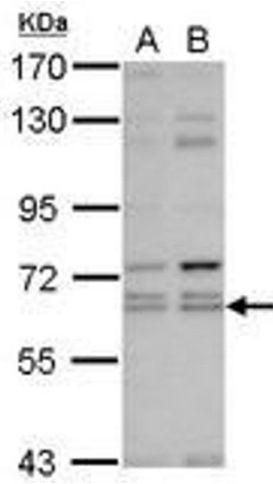


Image 1.