

Datasheet for ABIN1497065

anti-CA12 antibody

3 Images



[Go to Product page](#)

Overview

| | |
|--------------|--|
| Quantity: | 100 µL |
| Target: | CA12 |
| Reactivity: | Human |
| Host: | Mouse |
| Clonality: | Monoclonal |
| Conjugate: | This CA12 antibody is un-conjugated |
| Application: | Western Blotting (WB), Immunofluorescence (IF) |

Product Details

| | |
|---------------|--|
| Immunogen: | Full length human recombinant protein of human CA12(NP_001209) produced in HEK293T cell. Type of Immunogen: Recombinant protein |
| Clone: | 4D1 |
| Isotype: | IgG2a |
| Specificity: | Human CA12 |
| Purification: | Protein A/G purified |

Target Details

| | |
|-------------------|---|
| Target: | CA12 |
| Alternative Name: | CA12 / Carbonic Anhydrase XII (CA12 Products) |

Target Details

Background: Name/Gene ID: CA12
Synonyms: CA12, CA-XII, Carbonic anhydrase 12, Carbonic dehydratase, CAXII, HsT18816, Tumor antigen HOM-RCC-3.1.3, Carbonate dehydratase XII, Carbonic anhydrase XII

Gene ID: 771

NCBI Accession: [NP_001209](#)

UniProt: [O43570](#)

Application Details

Application Notes: Approved: IF (1:100), WB (1:2000)

Comment: Target Species of Antibody: Human

Restrictions: For Research Use only

Handling

Format: Liquid

Concentration: Lot specific

Buffer: PBS, pH 7.3, 1 % BSA, 50 % glycerol, 0.02 % sodium azide

Preservative: Sodium azide

Precaution of Use: This product contains Sodium azide: a POISONOUS AND HAZARDOUS SUBSTANCE which should be handled by trained staff only.

Handling Advice: Minimize freezing and thawing.

Storage: -20 °C

Storage Comment: Store at -20°C. Avoid freeze-thaw cycles.

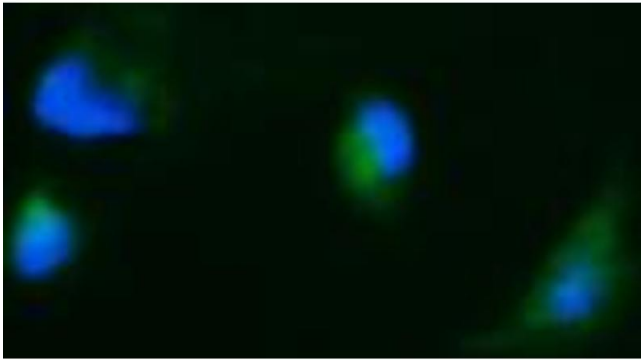


Image 1.

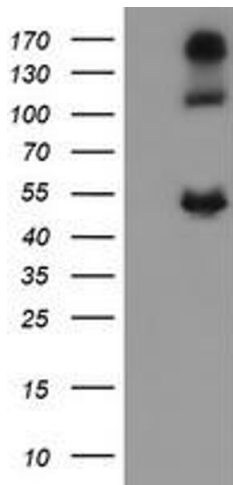


Image 2.

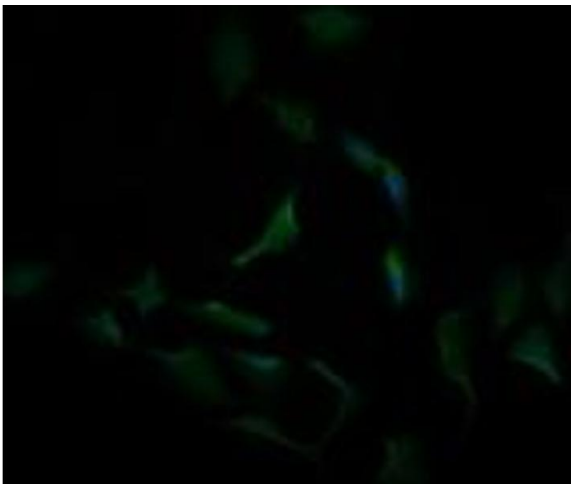


Image 3.