



Datasheet for ABIN1497066

## anti-CA12 antibody



[Go to Product page](#)

### 2 Images

#### Overview

|              |  |
|--------------|--|
| Quantity:    | 100 µL   |
| Target:      | CA12   |
| Reactivity:  | Human  |
| Host:        | Mouse  |
| Clonality:   | Monoclonal                                     |
| Conjugate:   | This CA12 antibody is un-conjugated            |
| Application: | Western Blotting (WB), Immunofluorescence (IF) |

#### Product Details

|               |  |
|---------------|--|
| Immunogen:    | Full length human recombinant protein of human CA12(NP_001209) produced in HEK293T cell.<br>Type of Immunogen: Recombinant protein |
| Clone:        | 2E9  |
| Isotype:      | IgG1   |
| Specificity:  | Human CA12   |
| Purification: | Protein A/G purified   |

#### Target Details

|                   |   |
|-------------------|---|
| Target:           | CA12  |
| Alternative Name: | CA12 / Carbonic Anhydrase XII ( <a href="#">CA12 Products</a> ) |

## Target Details

---

Background: Name/Gene ID: CA12

Synonyms: CA12, CA-XII, Carbonic anhydrase 12, Carbonic dehydratase, CAXII, HsT18816, Tumor antigen HOM-RCC-3.1.3, Carbonate dehydratase XII, Carbonic anhydrase XII

---

Gene ID: 771

---

NCBI Accession: [NP\\_001209](#)

---

UniProt: [O43570](#)

---

## Application Details

---

Application Notes: Approved: IF (1:100), WB (1:2000)

---

Comment: Target Species of Antibody: Human

---

Restrictions: For Research Use only

---

## Handling

---

Format: Liquid

---

Concentration: Lot specific

---

Buffer: PBS, pH 7.3, 1 % BSA, 50 % glycerol, 0.02 % sodium azide

---

Preservative: Sodium azide

---

Precaution of Use: This product contains Sodium azide: a POISONOUS AND HAZARDOUS SUBSTANCE which should be handled by trained staff only.

---

Handling Advice: Minimize freezing and thawing.

---

Storage: -20 °C

---

Storage Comment: Store at -20°C. Avoid freeze-thaw cycles.

---

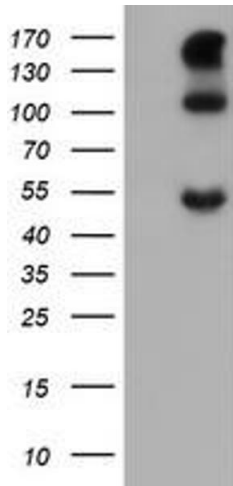


Image 1.

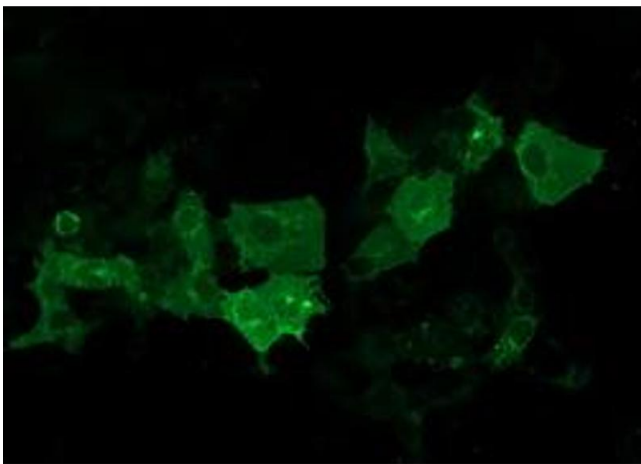


Image 2.