



[Go to Product page](#)

Datasheet for ABIN1497113
anti-CBWD1 antibody (AA 131-395)

2 Images

Overview

Quantity:	100 µL
Target:	CBWD1
Binding Specificity:	AA 131-395
Reactivity:	Human
Host:	Rabbit
Clonality:	Polyclonal
Application:	Western Blotting (WB), Immunofluorescence (IF), Immunocytochemistry (ICC)

Product Details

Immunogen:	Recombinant fragment corresponding to a region within amino acids 131 and 395 of CBWD1 (SwissProt Q9BRT8). Percent identity by BLAST analysis: Type of Immunogen: Recombinant protein
Isotype:	IgG
Specificity:	Human CBWD1
Predicted Reactivity:	Percent identity by BLAST analysis:
Purification:	Immunoaffinity purified

Target Details

Target:	CBWD1
Alternative Name:	CBWD1 (CBWD1 Products)

Target Details

Background:	Name/Gene ID: CBWD1 Synonyms: CBWD1, COBW domain containing 1, NPC-A-6, COBP, COBW-like protein
Gene ID:	55871
UniProt:	Q9BRT8

Application Details

Application Notes:	Approved: ICC (1:100 - 1:1000), IF (1:100 - 1:1000), WB (1:500 - 1:3000) Usage: Suggested starting dilutions are as follows: Western blot: 1:500-1:3000, ICC/IF: 1:100-1:1000. Not yet tested in other applications. Optimal working dilutions should be determined experimentally by the end user.
Comment:	Target Species of Antibody: Human
Restrictions:	For Research Use only

Handling

Format:	Liquid
Concentration:	Lot specific
Buffer:	PBS, pH 7, 1 % BSA, 20 % Glycerol, 0.01 % Thimerosal
Preservative:	Thimerosal (Merthiolate)
Precaution of Use:	This product contains Thimerosal (Merthiolate): a POISONOUS AND HAZARDOUS SUBSTANCE which should be handled by trained staff only.
Handling Advice:	Avoid freeze-thaw cycles.
Storage:	-20 °C
Storage Comment:	Aliquot and freeze at -20°C. Avoid freeze-thaw cycles.

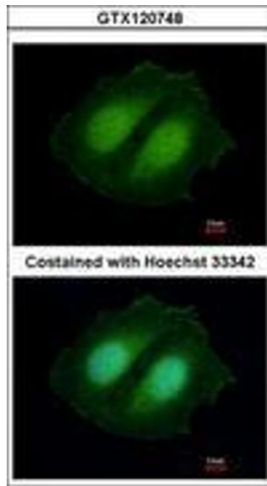


Image 1.

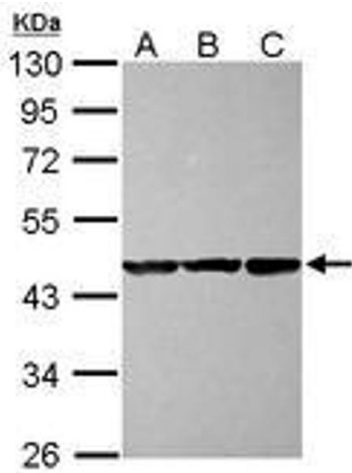


Image 2.