



[Go to Product page](#)

Datasheet for ABIN1497118  
**anti-CBWD1 antibody**

5 Images

### Overview

Quantity:	100 µL
Target:	CBWD1
Reactivity:	Human, Rat, Dog, Monkey
Host:	Mouse
Clonality:	Monoclonal
Application:	Western Blotting (WB), Flow Cytometry (FACS)

### Product Details

Immunogen:	Full length human recombinant protein of human CBWD1 (NP_060961) produced in HEK293T cell.
	Type of Immunogen: Recombinant protein
Clone:	4E8
Isotype:	IgG2b
Specificity:	Human CBWD1
Purification:	Protein A/G purified

### Target Details

Target:	CBWD1
Alternative Name:	CBWD1 ( <a href="#">CBWD1 Products</a> )
Background:	Name/Gene ID: CBWD1

## Target Details

---

Synonyms: CBWD1, COBW domain containing 1, NPC-A-6, COBP, COBW-like protein

Gene ID: 55871

NCBI Accession: [NP\\_060961](#)

UniProt: [Q9BRT8](#)

## Application Details

---

Application Notes: Approved: Flo (1:100), WB (1:500 - 1:2000)

Usage: Concentration: 0.60 mg/mL (Lot dependent)

Comment: Target Species of Antibody: Human

Restrictions: For Research Use only

## Handling

---

Format: Liquid

Concentration: Lot specific

Buffer: PBS, pH 7.3, 1 % BSA, 50 % glycerol, 0.02 % sodium azide

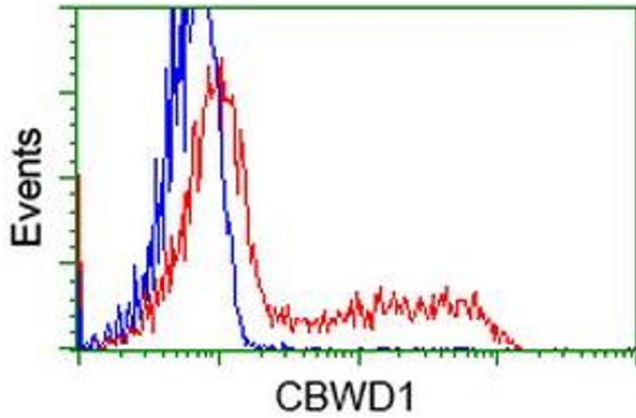
Preservative: Sodium azide

Precaution of Use: This product contains Sodium azide: a POISONOUS AND HAZARDOUS SUBSTANCE which should be handled by trained staff only.

Handling Advice: Minimize freezing and thawing.

Storage: -20 °C

Storage Comment: Store at -20°C. Avoid freeze-thaw cycles.



### Flow Cytometry

Image 1.

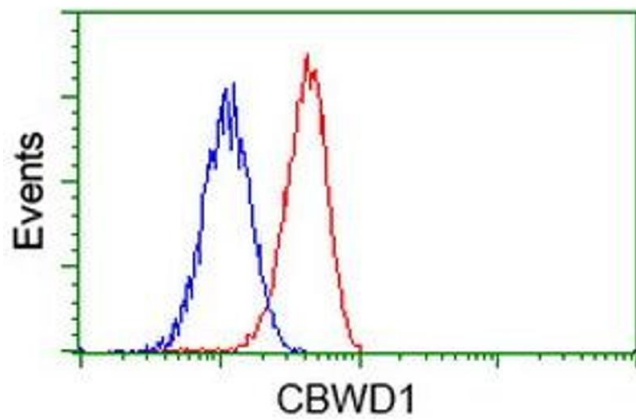
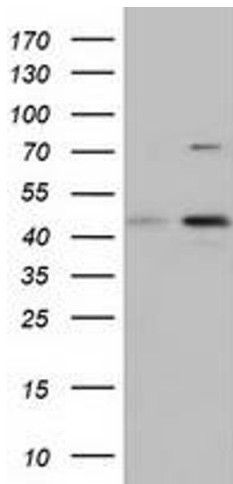


Image 2.



### Western Blotting

Image 3.

Please check the [product details page](#) for more images. Overall 5 images are available for ABIN1497118.