



[Go to Product page](#)

Datasheet for ABIN1497124
anti-CCDC50 antibody (AA 1-187)

3 Images

Overview

Quantity:	100 µL
Target:	CCDC50
Binding Specificity:	AA 1-187
Reactivity:	Human
Host:	Rabbit
Clonality:	Polyclonal
Conjugate:	This CCDC50 antibody is un-conjugated
Application:	Western Blotting (WB), Immunohistochemistry (IHC), Immunohistochemistry (Paraffin-embedded Sections) (IHC (p)), Immunofluorescence (IF), Immunocytochemistry (ICC)

Product Details

Immunogen:	Recombinant fragment corresponding to a region within amino acids 1 and 187 of Ymer (SwissProt Q8IVM0). Percent identity by BLAST analysis: Human (100%), Bovine (95%), Mouse (88%). Type of Immunogen: Recombinant protein
Isotype:	IgG
Specificity:	Human CCDC50
Predicted Reactivity:	Percent identity by BLAST analysis: Human (100%) Bovine (95%) Mouse (88%).
Purification:	Immunoaffinity purified

Target Details

Target:	CCDC50
Alternative Name:	CCDC50 (CCDC50 Products)
Background:	Name/Gene ID: CCDC50 Synonyms: CCDC50, C3orf6, DFNA44, YMER, Protein Ymer
Gene ID:	152137
UniProt:	Q8IVM0

Application Details

Application Notes:	Approved: ICC (1:100 - 1:1000), IF (1:100 - 1:1000), IHC, IHC-P (1:100 - 1:1000), WB (1:1000 - 1:10000) Usage: Suggested starting dilutions are as follows: Western blot: 1:1000-1:10000, IHC-Paraffin: 1:100-1:1000, ICC/IF: 1:100-1:1000. Not yet tested in other applications. Optimal working dilutions should be determined experimentally by the end user.
Comment:	Target Species of Antibody: Human
Restrictions:	For Research Use only

Handling

Format:	Liquid
Concentration:	Lot specific
Buffer:	PBS, pH 7, 1 % BSA, 20 % Glycerol, 0.01 % Thimerosal
Preservative:	Thimerosal (Merthiolate)
Precaution of Use:	This product contains Thimerosal (Merthiolate): a POISONOUS AND HAZARDOUS SUBSTANCE which should be handled by trained staff only.
Handling Advice:	Avoid freeze-thaw cycles.
Storage:	-20 °C
Storage Comment:	Aliquot and freeze at -20°C. Avoid freeze-thaw cycles.

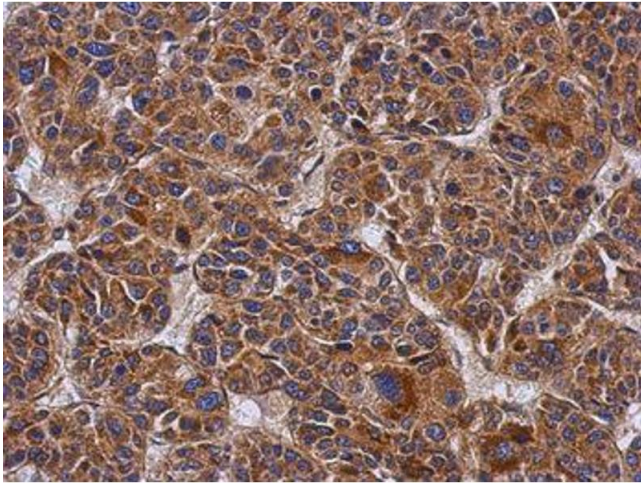


Image 1.

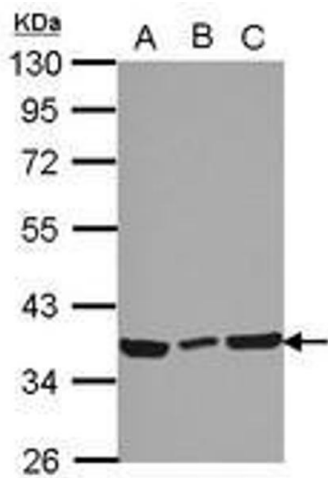


Image 2.

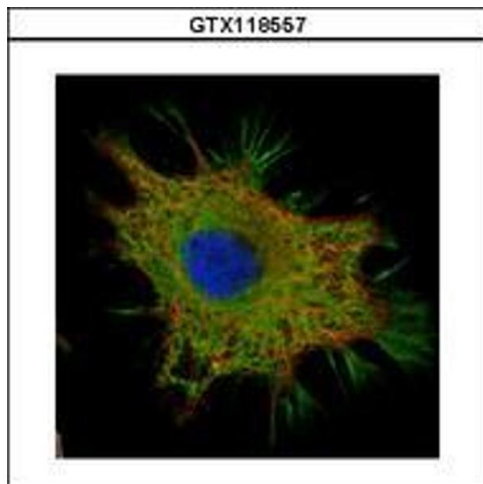


Image 3.