



[Go to Product page](#)

Datasheet for ABIN1497128

anti-CCL2 antibody

7 Images

Overview

Quantity:	100 µL
Target:	CCL2
Reactivity:	Human
Host:	Mouse
Clonality:	Monoclonal
Conjugate:	This CCL2 antibody is un-conjugated
Application:	Western Blotting (WB), Immunohistochemistry (IHC), ELISA, Immunohistochemistry (Paraffin-embedded Sections) (IHC (p)), Immunofluorescence (IF), Flow Cytometry (FACS)

Product Details

Immunogen:	Purified recombinant fragment of human CCL2 expressed in E. Coli.\
Clone:	2D8
Isotype:	IgG1
Specificity:	Human, Mouse, Monkey
Purification:	Purified

Target Details

Target:	CCL2
Alternative Name:	CCL2 / MCP-1 (CCL2 Products)
Background:	Name/Gene ID: CCL2

Target Details

Subfamily: Intercrine beta

Family: Intercrine

Synonyms: CCL2, C-C motif chemokine 2, Chemokine (C-C motif) ligand 2, GDCF-2, HC11, HSMCR30, MCP1, SCYA2, Small-inducible cytokine A2, Monocyte secretory protein JE, MCAF, MCP-1, Monocyte chemotactic protein 1, SMC-CF

Gene ID: 6347

UniProt: [P13500](#)

Pathways: [Cellular Response to Molecule of Bacterial Origin](#), [Positive Regulation of Immune Effector Process](#), [ER-Nucleus Signaling](#), [Unfolded Protein Response](#), [The Global Phosphorylation Landscape of SARS-CoV-2 Infection](#)

Application Details

Application Notes: Approved: ELISA (1:10000), Flo (1:200 - 1:400), IF (1:200 - 1:1000), IHC, IHC-P (1:200 - 1:1000), WB (1:100 - 1:500)

Comment: Target Species of Antibody: Human

Restrictions: For Research Use only

Handling

Format: Liquid

Concentration: Lot specific

Buffer: Purified antibody in PBS containing 0.05 % sodium azide

Preservative: Sodium azide

Precaution of Use: This product contains Sodium azide: a POISONOUS AND HAZARDOUS SUBSTANCE which should be handled by trained staff only.

Handling Advice: Avoid freeze-thaw cycles.

Storage: 4 °C, -20 °C

Storage Comment: Short term: 4°C
Long term: -20°C.

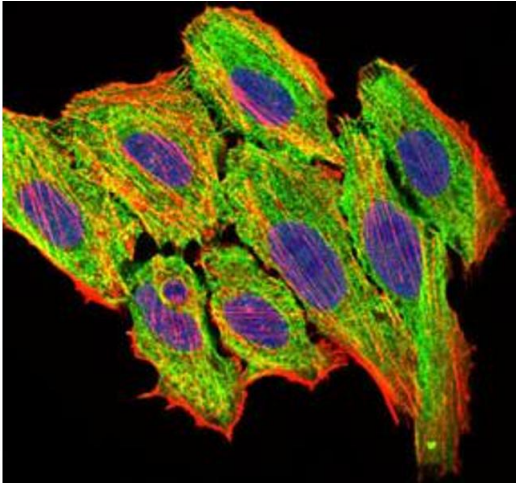


Image 1.

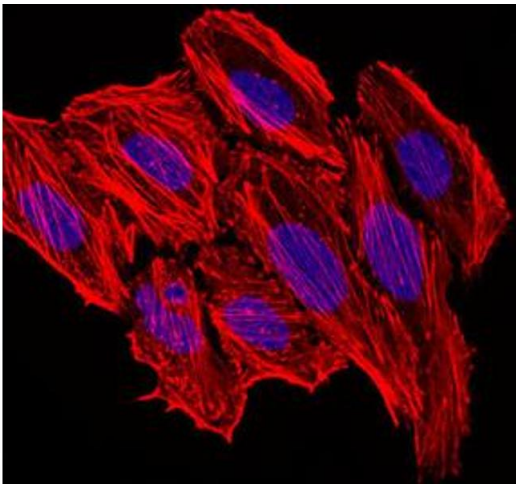


Image 2.

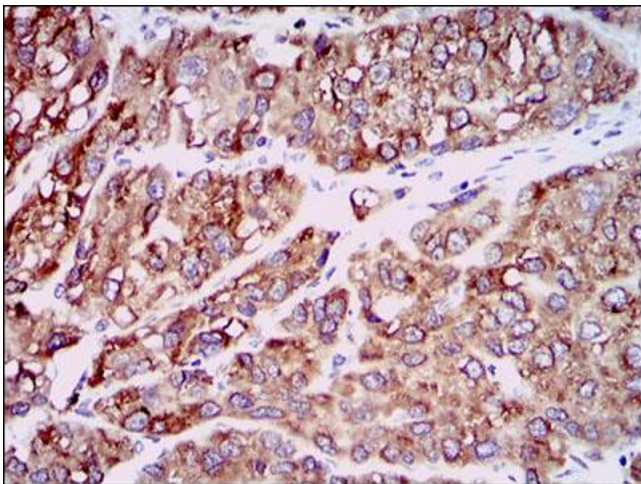


Image 3.

Please check the [product details page](#) for more images. Overall 7 images are available for ABIN1497128.