



[Go to Product page](#)

Datasheet for ABIN1497211

anti-CD22 antibody

3 Images

Overview

Quantity:	100 µL
Target:	CD22
Reactivity:	Human, Mouse, Rat, Monkey, Dog
Host:	Mouse
Clonality:	Monoclonal
Conjugate:	This CD22 antibody is un-conjugated
Application:	Western Blotting (WB), Immunohistochemistry (IHC), Immunohistochemistry (Paraffin-embedded Sections) (IHC (p))

Product Details

Immunogen:	Full length human recombinant protein of human CD22(NP_001762) produced in HEK293T cell. Type of Immunogen: Recombinant protein
Clone:	4C3
Isotype:	IgG1
Specificity:	Human CD22
Purification:	Protein A/G purified

Target Details

Target:	CD22
Alternative Name:	CD22 (CD22 Products)

Target Details

Background: Name/Gene ID: CD22
Family: Immunoglobulin
Synonyms: CD22, CD22 Molecule, CD22 antigen, SIGLEC2, SIGLEC-2, T-cell surface antigen
Leu-14, B-cell receptor CD22, BL-CAM

Gene ID: 933

NCBI Accession: [NP_001762](#)

Application Details

Application Notes: Approved: IHC, IHC-P (1:150), WB (1:200 - 1:2000)

Comment: Target Species of Antibody: Human

Restrictions: For Research Use only

Handling

Format: Liquid

Concentration: Lot specific

Buffer: PBS, pH 7.3, 1 % BSA, 50 % glycerol, 0.02 % sodium azide

Preservative: Sodium azide

Precaution of Use: This product contains Sodium azide: a POISONOUS AND HAZARDOUS SUBSTANCE which should be handled by trained staff only.

Storage: -20 °C

Storage Comment: Store at -20°C. Avoid freeze-thaw cycles.

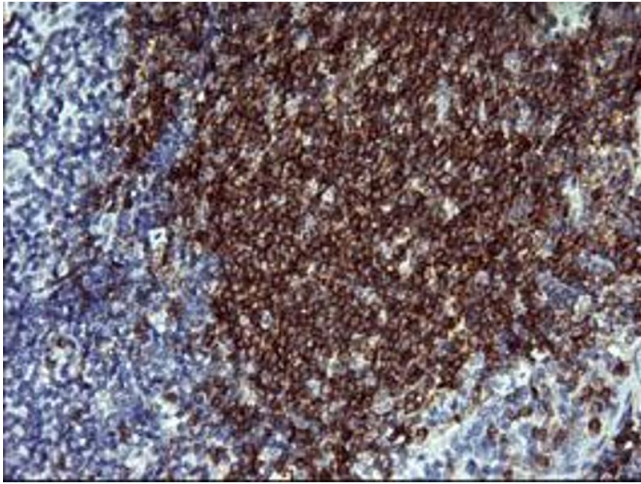


Image 1.

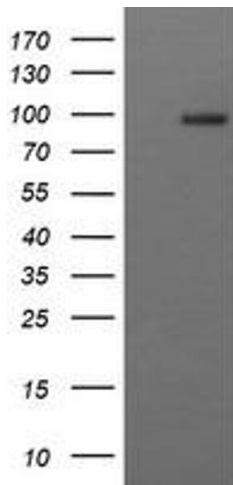


Image 2.

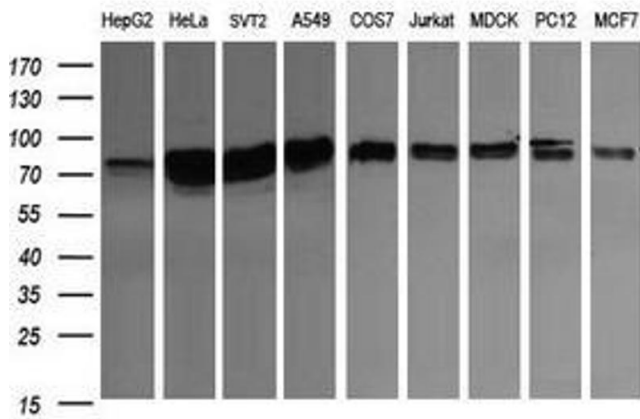


Image 3.