



[Go to Product page](#)

Datasheet for ABIN1497480

anti-CCT8L2 antibody

4 Images

Overview

Quantity:	100 µL
Target:	CCT8L2
Reactivity:	Human
Host:	Mouse
Clonality:	Monoclonal
Conjugate:	This CCT8L2 antibody is un-conjugated
Application:	Western Blotting (WB), Immunofluorescence (IF), Immunohistochemistry (IHC), Immunohistochemistry (Paraffin-embedded Sections) (IHC (p))

Product Details

Immunogen:	Full length human recombinant protein of human CCT8L2(NP_055221) produced in HEK293T cell. Type of Immunogen: Recombinant protein
Clone:	4A4
Isotype:	IgG1
Specificity:	Human CESK1 / CCT8L2
Purification:	Protein A/G purified

Target Details

Target:	CCT8L2
---------	--------

Target Details

Alternative Name:	CCT8L2 (CCT8L2 Products)
Background:	Name/Gene ID: CCT8L2 Subfamily: Potassium channel - calcium-activated Family: Ion Channel Synonyms: CCT8L2, CESK1, KCNMB3L, KCNMBLP, T-complex protein 1
Gene ID:	150160
NCBI Accession:	NP_055221

Application Details

Application Notes:	Approved: IF (1:100), IHC, IHC-P (1:150), WB (1:250 - 1:1000)
Comment:	Target Species of Antibody: Human
Restrictions:	For Research Use only

Handling

Format:	Liquid
Concentration:	Lot specific
Buffer:	PBS, pH 7.3, 1 % BSA, 50 % glycerol, 0.02 % sodium azide
Preservative:	Sodium azide
Precaution of Use:	This product contains Sodium azide: a POISONOUS AND HAZARDOUS SUBSTANCE which should be handled by trained staff only.
Storage:	-20 °C
Storage Comment:	Store at -20°C. Avoid freeze-thaw cycles.

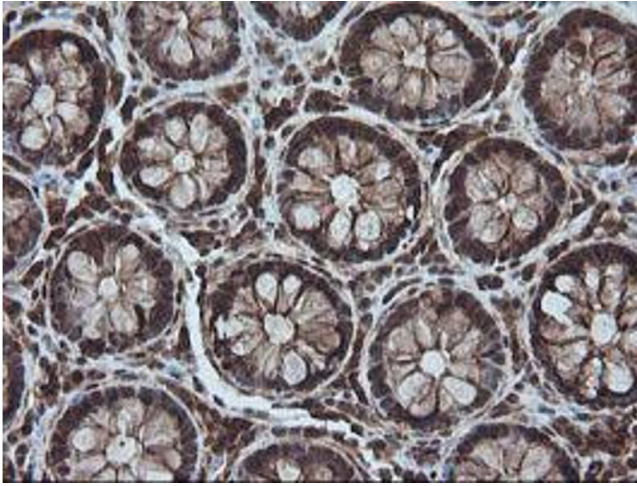


Image 1.

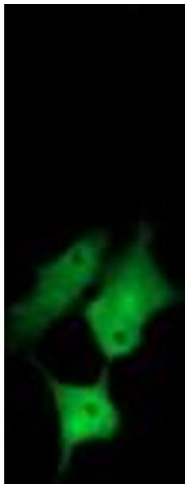


Image 2.

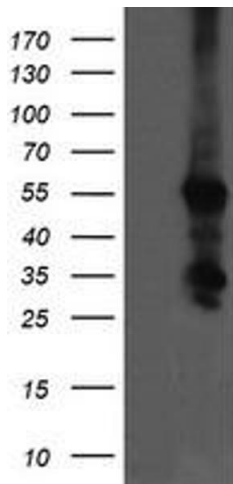


Image 3.

Please check the [product details page](#) for more images. Overall 4 images are available for ABIN1497480.