



[Go to Product page](#)

Datasheet for ABIN1498026
anti-ENO3 antibody (AA 1-371)

2 Images

Overview

Quantity:	100 µL
Target:	ENO3
Binding Specificity:	AA 1-371
Reactivity:	Human
Host:	Rabbit
Clonality:	Polyclonal
Conjugate:	This ENO3 antibody is un-conjugated
Application:	Western Blotting (WB), Immunofluorescence (IF), Immunocytochemistry (ICC)

Product Details

Immunogen:	Recombinant protein fragment contain a sequence corresponding to a region within amino acids 1 and 371 of ENO3. Percent identity by BLAST analysis: Human (100%), Mouse, Porcine, Rabbit, Rat, Bovine (97%), Xenopus (89%), Zebrafish (85%), Chicken (82%). Type of Immunogen: Recombinant protein
Isotype:	IgG
Specificity:	Human ENO3
Predicted Reactivity:	Percent identity by BLAST analysis: Human (100%) Mouse, Porcine, Rabbit, Rat, Bovine (97%) Xenopus (89%) Zebrafish (85%) Chicken (82%).
Purification:	Immunoaffinity purified

Target Details

Target:	ENO3
Alternative Name:	ENO3 / Enolase 3 (ENO3 Products)
Background:	Name/Gene ID: ENO3 Synonyms: ENO3, Beta-enolase, Enolase 3, Enolase 3 (beta, muscle), Enolase 3, (beta, muscle), Muscle-specific enolase, MSE, Skeletal muscle enolase, GSD13
Gene ID:	2027
UniProt:	P13929

Application Details

Application Notes:	Approved: ICC (1:100 - 1:1000), IF (1:100 - 1:1000), WB (1:5000 - 1:20000) Usage: Suggested starting dilutions are as follows: Western blot: 1:5000-1:20000, ICC/IF: 1:100-1:1000. Not yet tested in other applications. Optimal working dilutions should be determined experimentally by the end user.
Comment:	Target Species of Antibody: Human
Restrictions:	For Research Use only

Handling

Format:	Liquid
Concentration:	Lot specific
Buffer:	PBS, pH 7, 1 % BSA, 20 % Glycerol, 0.01 % Thimerosal
Preservative:	Thimerosal (Merthiolate)
Precaution of Use:	This product contains Thimerosal (Merthiolate): a POISONOUS AND HAZARDOUS SUBSTANCE which should be handled by trained staff only.
Handling Advice:	Avoid freeze-thaw cycles.
Storage:	-20 °C
Storage Comment:	Aliquot and freeze at -20°C. Avoid freeze-thaw cycles.

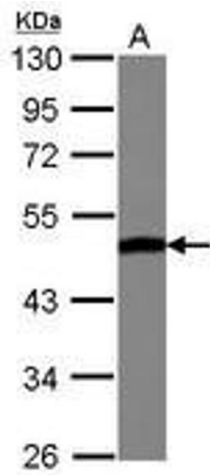


Image 1.

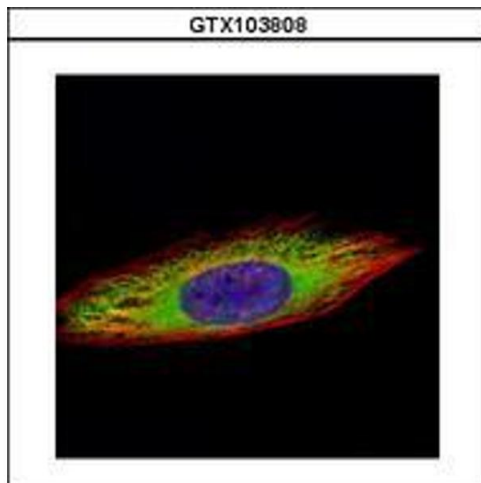


Image 2.