



[Go to Product page](#)

Datasheet for ABIN1498050  
**anti-Epsin 2 antibody**

13 Images

Overview

Quantity:	100 µL
Target:	Epsin 2 (EPN2)
Reactivity:	Human, Rat, Monkey
Host:	Mouse
Clonality:	Monoclonal
Conjugate:	This Epsin 2 antibody is un-conjugated
Application:	Western Blotting (WB), Immunohistochemistry (IHC), Immunofluorescence (IF), Immunohistochemistry (Paraffin-embedded Sections) (IHC (p)), Flow Cytometry (FACS)

Product Details

Immunogen:	Full length human recombinant protein of human EPN2(NP_055779) produced in HEK293T cell. Type of Immunogen: Recombinant protein
Clone:	1C2
Isotype:	IgG1
Specificity:	Human EPN2
Purification:	Protein A/G purified

Target Details

Target:	Epsin 2 (EPN2)
Alternative Name:	EPN2 ( <a href="#">EPN2 Products</a> )

## Target Details

---

Background:	Name/Gene ID: EPN2  Synonyms: EPN2, Epsin-2, EHB21, EPS-15-interacting protein 2, Eps15 binding protein, Epsin 2, KIAA1065
Gene ID:	22905
NCBI Accession:	<a href="#">NP_055779</a>
Pathways:	<a href="#">EGFR Downregulation</a>

## Application Details

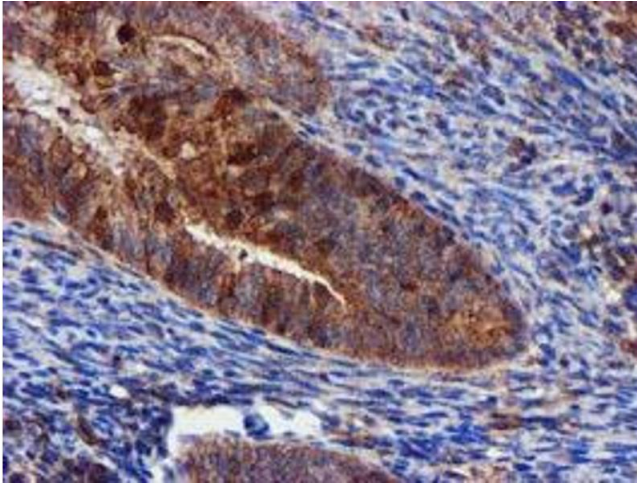
---

Application Notes:	Approved: Flo (1:100), IF (1:100), IHC, IHC-P (1:150), WB (1:500 - 1:2000)
Comment:	Target Species of Antibody: Human
Restrictions:	For Research Use only

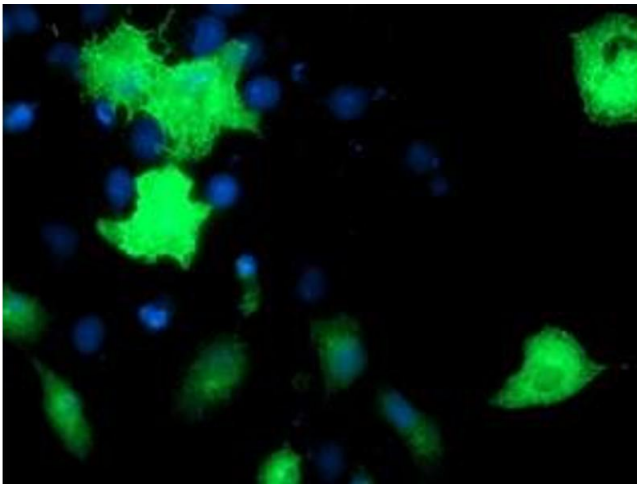
## Handling

---

Format:	Liquid
Concentration:	Lot specific
Buffer:	PBS, pH 7.3, 1 % BSA, 50 % glycerol, 0.02 % sodium azide
Preservative:	Sodium azide
Precaution of Use:	This product contains Sodium azide: a POISONOUS AND HAZARDOUS SUBSTANCE which should be handled by trained staff only.
Storage:	-20 °C
Storage Comment:	Store at -20°C. Avoid freeze-thaw cycles.

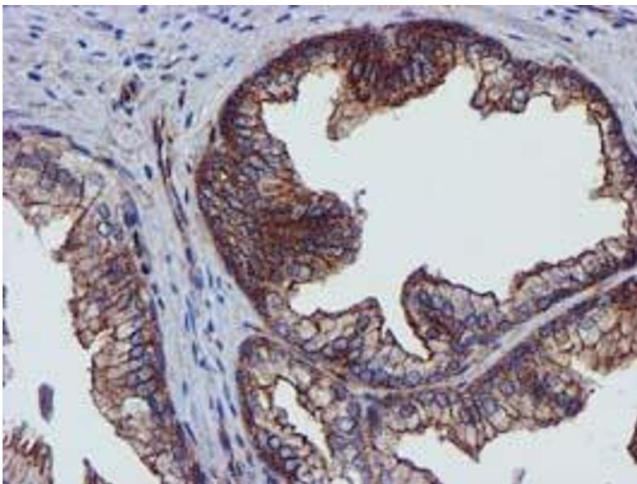


**Image 1.**



**Immunofluorescence**

**Image 2.**



**Image 3.**

Please check the [product details page](#) for more images. Overall 13 images are available for ABIN1498050.