

Datasheet for ABIN1498218 **anti-FAM98B antibody (AA 1-266)**



[Go to Product page](#)

1 Image

Overview

| | |
|----------------------|---------------------------------------|
| Quantity: | 100 µL |
| Target: | FAM98B |
| Binding Specificity: | AA 1-266 |
| Reactivity: | Human |
| Host: | Rabbit |
| Clonality: | Polyclonal |
| Conjugate: | This FAM98B antibody is un-conjugated |
| Application: | Western Blotting (WB) |

Product Details

| | |
|-----------------------|---|
| Immunogen: | Recombinant protein fragment contain a sequence corresponding to a region within amino acids 1 and 266 (Q52LJ0) of FAM98B. Percent identity by BLAST analysis: Human (100%), Mouse (90%). Type of Immunogen: Recombinant protein |
| Isotype: | IgG |
| Specificity: | Human FAM98B |
| Predicted Reactivity: | Percent identity by BLAST analysis: Human (100%) Mouse (90%). |
| Purification: | Immunoaffinity purified |

Target Details

| | |
|-------------------|--|
| Target: | FAM98B |
| Alternative Name: | FAM98B (FAM98B Products) |
| Background: | Name/Gene ID: FAM98B Synonyms: FAM98B, Protein FAM98B |
| Gene ID: | 283742 |
| UniProt: | Q52LJ0 |

Application Details

| | |
|--------------------|---|
| Application Notes: | Approved: WB (1:500 - 1:3000) Usage: Suggested starting dilutions are as follows: Western blot: 1:500-1:3000. Not yet tested in other applications. Optimal working dilutions should be determined experimentally by the end user. |
| Comment: | Target Species of Antibody: Human |
| Restrictions: | For Research Use only |

Handling

| | |
|--------------------|--|
| Format: | Liquid |
| Concentration: | Lot specific |
| Buffer: | 0.1 M Tris-glycine, pH 7, 20 % Glycerol, 0.01 % Thimerosal |
| Preservative: | Thimerosal (Merthiolate) |
| Precaution of Use: | This product contains Thimerosal (Merthiolate): a POISONOUS AND HAZARDOUS SUBSTANCE which should be handled by trained staff only. |
| Handling Advice: | Avoid freeze-thaw cycles. |
| Storage: | -20 °C |
| Storage Comment: | Aliquot and freeze at -20°C. Avoid freeze-thaw cycles. |

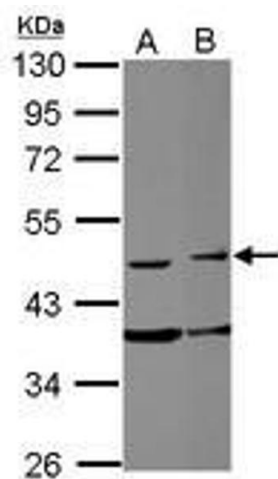


Image 1.