

Datasheet for ABIN1498366

## anti-GALE antibody

11 Images



[Go to Product page](#)

### Overview

Quantity:	100 µL
Target:	GALE
Reactivity:	Human, Rat, Dog, Monkey
Host:	Mouse
Clonality:	Monoclonal
Conjugate:	This GALE antibody is un-conjugated
Application:	Western Blotting (WB), Immunohistochemistry (IHC), Immunohistochemistry (Paraffin-embedded Sections) (IHC (p))

### Product Details

Immunogen:	Full length human recombinant protein of human GALE (NP_000394) produced in HEK293T cell.
	Type of Immunogen: Recombinant protein
Clone:	1C4
Isotype:	IgG1
Specificity:	Human GALE
Purification:	Protein A/G purified

### Target Details

Target:	GALE
---------	------

## Target Details

---

Alternative Name: [GALE \(GALE Products\)](#)

Background: Name/Gene ID: GALE

Synonyms: GALE, Galactowaldenase, Galactose-4-epimerase, UDP-, UDP-glucose 4-epimerase, SDR1E1, UDP galactose-4-epimerase, UDP-galactose 4-epimerase, UDP-galactose-4-epimerase

Gene ID: 2582

NCBI Accession: [NP\\_000394](#)

Pathways: [Response to Water Deprivation](#), [Cellular Glucan Metabolic Process](#)

## Application Details

---

Application Notes: Approved: IHC, IHC-P (1:150), WB (1:500 - 1:2000)

Comment: Target Species of Antibody: Human

Restrictions: For Research Use only

## Handling

---

Format: Liquid

Concentration: Lot specific

Buffer: PBS, pH 7.3, 1 % BSA, 50 % glycerol, 0.02 % sodium azide

Preservative: Sodium azide

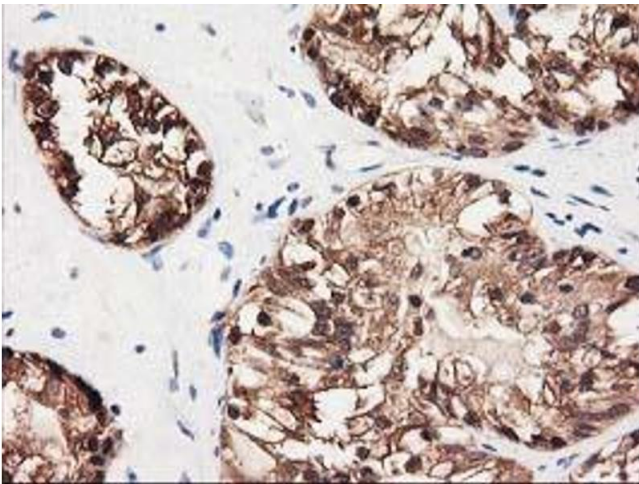
Precaution of Use: This product contains Sodium azide: a POISONOUS AND HAZARDOUS SUBSTANCE which should be handled by trained staff only.

Storage: -20 °C

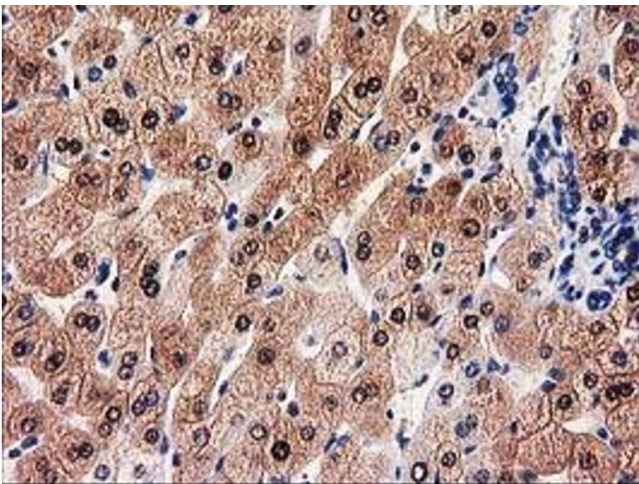
Storage Comment: Store at -20°C. Avoid freeze-thaw cycles.



**Image 1.**



**Image 2.**



**Image 3.**

Please check the [product details page](#) for more images. Overall 11 images are available for ABIN1498366.