



Datasheet for ABIN1498431
anti-Gephyrin antibody



[Go to Product page](#)

4 Images

Overview

Quantity:	100 µL
Target:	Gephyrin (GPHN)
Reactivity:	Human, Rat, Monkey
Host:	Mouse
Clonality:	Monoclonal
Application:	Western Blotting (WB), Flow Cytometry (FACS)

Product Details

Immunogen:	Full length human recombinant protein of human GPHN (NP_065857) produced in HEK293T cell.
	Type of Immunogen: Recombinant protein
Clone:	3A6
Isotype:	IgG2a
Specificity:	Human Gephyrin
Purification:	Protein A/G purified

Target Details

Target:	Gephyrin (GPHN)
Alternative Name:	Gephyrin (GPHN Products)
Background:	Name/Gene ID: GPHN

Target Details

Synonyms: GPHN, Gephyrin, KIAA1385, GEPH, GPH, GPHRYN, HKPX1, MOCODC

Gene ID: 10243

NCBI Accession: [NP_065857](#)

Pathways: [Synaptic Membrane](#), [Skeletal Muscle Fiber Development](#)

Application Details

Application Notes: Approved: Flo (1:100), WB (1:500 - 1:2000)

Comment: Target Species of Antibody: Human

Restrictions: For Research Use only

Handling

Format: Liquid

Concentration: Lot specific

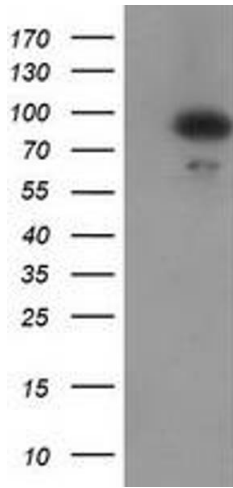
Buffer: PBS, pH 7.3, 1 % BSA, 50 % glycerol, 0.02 % sodium azide

Preservative: Sodium azide

Precaution of Use: This product contains Sodium azide: a POISONOUS AND HAZARDOUS SUBSTANCE which should be handled by trained staff only.

Storage: -20 °C

Storage Comment: Store at -20°C. Avoid freeze-thaw cycles.



Western Blotting

Image 1.

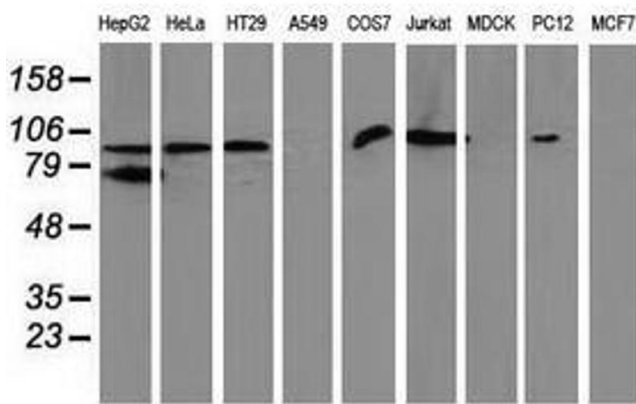


Image 2.

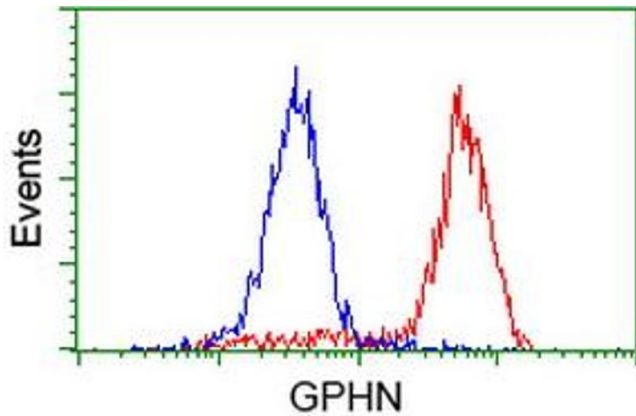


Image 3.

Please check the [product details page](#) for more images. Overall 4 images are available for ABIN1498431.