



Datasheet for ABIN1498502 **anti-GPD2 antibody (AA 74-306)**



[Go to Product page](#)

1 Image

Overview

| | |
|----------------------|-------------------------------------|
| Quantity: | 100 µL |
| Target: | GPD2 |
| Binding Specificity: | AA 74-306 |
| Reactivity: | Human |
| Host: | Rabbit |
| Clonality: | Polyclonal |
| Conjugate: | This GPD2 antibody is un-conjugated |
| Application: | Western Blotting (WB) |

Product Details

| | |
|-----------------------|---|
| Immunogen: | Recombinant protein fragment contain a sequence corresponding to a region within amino acids 74 and 306 (P43304) of GPD2. Percent identity by BLAST analysis: Human (100%), Bovine (95%), Mouse (93%), Rat (92%), Zebrafish (86%), Xenopus (85%). Type of Immunogen: Recombinant protein |
| Isotype: | IgG |
| Specificity: | Human GPD2 |
| Predicted Reactivity: | Percent identity by BLAST analysis: Human (100%) Bovine (95%) Mouse (93%) Rat (92%) Zebrafish (86%) Xenopus (85%). |
| Purification: | Immunoaffinity purified |

Target Details

Target: GPD2

Alternative Name: GPD2 ([GPD2 Products](#))

Background: Name/Gene ID: GPD2

Synonyms: GPD2, GDH2, GPDH-M, GPD-M, GPDM, MGPDH, MtGPD

Gene ID: 2820

Application Details

Application Notes: Approved: WB (1:500 - 1:3000)

Usage: Suggested starting dilutions are as follows: Western blot: 1:500-1:3000. Not yet tested in other applications. Optimal working dilutions should be determined experimentally by the end user.

Comment: Target Species of Antibody: Human

Restrictions: For Research Use only

Handling

Format: Liquid

Concentration: Lot specific

Buffer: 0.1 M Tris-glycine, pH 7, 20 % Glycerol, 0.01 % Thimerosal

Preservative: Thimerosal (Merthiolate)

Precaution of Use: This product contains Thimerosal (Merthiolate): a POISONOUS AND HAZARDOUS SUBSTANCE which should be handled by trained staff only.

Handling Advice: Avoid freeze-thaw cycles.

Storage: -20 °C

Storage Comment: Aliquot and freeze at -20°C. Avoid freeze-thaw cycles.

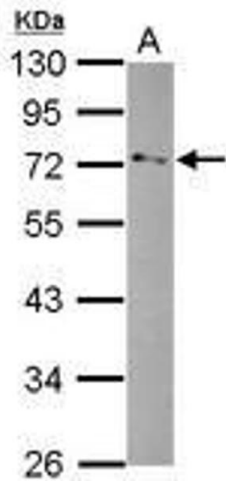


Image 1.