



Datasheet for ABIN1498536  
**anti-GSPT1 antibody (AA 1-637)**



[Go to Product page](#)

3 Images

Overview

Quantity:	100 µL
Target:	GSPT1
Binding Specificity:	AA 1-637
Reactivity:	Human
Host:	Rabbit
Clonality:	Polyclonal
Conjugate:	This GSPT1 antibody is un-conjugated
Application:	Immunohistochemistry (IHC), Western Blotting (WB), Immunohistochemistry (Paraffin-embedded Sections) (IHC (p)), Immunofluorescence (IF), Immunocytochemistry (ICC)

Product Details

Immunogen:	Recombinant protein fragment contain a sequence corresponding to a region within amino acids 1 and 637 of GSPT1. Percent identity by BLAST analysis:  Type of Immunogen: Recombinant protein
Isotype:	IgG
Specificity:	Human GSPT1
Predicted Reactivity:	Percent identity by BLAST analysis:
Purification:	Immunoaffinity purified

## Target Details

---

Target:	GSPT1
Alternative Name:	GSPT1 ( <a href="#">GSPT1 Products</a> )
Background:	Name/Gene ID: GSPT1  Synonyms: GSPT1, 551G9.2, ETF3A, ERF3a, G1 to S phase transition 1, GST1
Gene ID:	2935
UniProt:	<a href="#">P15170</a>

## Application Details

---

Application Notes:	Approved: ICC (1:100 - 1:1000), IF (1:100 - 1:1000), IHC, IHC-P (1:100 - 1:1000), WB (1:500 - 1:3000)  Usage: Suggested starting dilutions are as follows: Western blot: 1:500-1:3000, IHC-Paraffin: 1:100-1:1000 [suggested antigen retrieval using heat mediated 10 mM Citrate buffer ( pH 6.0) or Tris-EDTA buffer ( pH 8.0)], ICC/IF: 1:100-1:1000. Not yet tested in other applications. Optimal working dilutions should be determined experimentally by the end user.
Comment:	Target Species of Antibody: Human
Restrictions:	For Research Use only

## Handling

---

Format:	Liquid
Concentration:	Lot specific
Buffer:	PBS, pH 7, 1 % BSA, 20 % Glycerol, 0.01 % Thimerosal
Preservative:	Thimerosal (Merthiolate)
Precaution of Use:	This product contains Thimerosal (Merthiolate): a POISONOUS AND HAZARDOUS SUBSTANCE which should be handled by trained staff only.
Handling Advice:	Avoid freeze-thaw cycles.
Storage:	-20 °C
Storage Comment:	Aliquot and freeze at -20°C. Avoid freeze-thaw cycles.

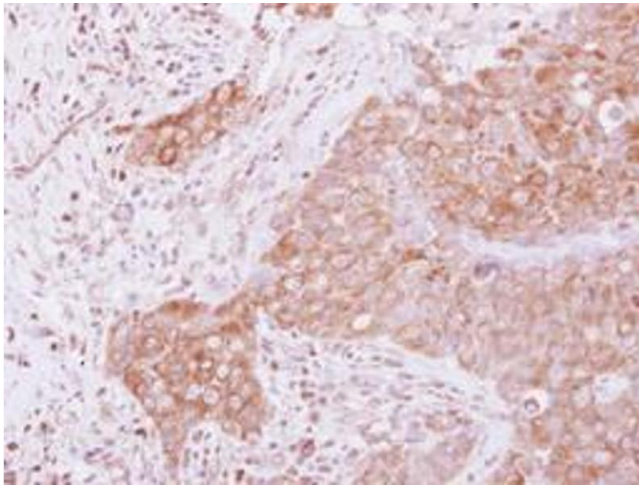


Image 1.

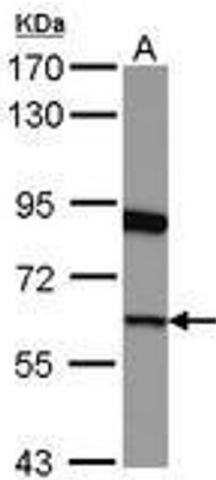


Image 2.

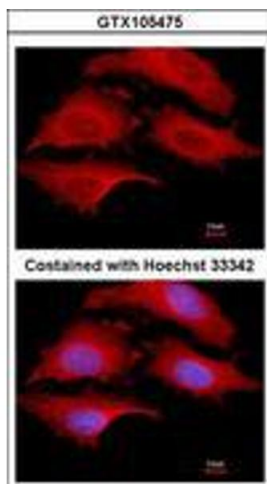


Image 3.