



Datasheet for ABIN1498636

anti-HES1 antibody



[Go to Product page](#)

2 Images

Overview

Quantity:	100 µL
Target:	HES1
Reactivity:	Human, Mouse, Rat, Monkey
Host:	Mouse
Clonality:	Monoclonal
Conjugate:	This HES1 antibody is un-conjugated
Application:	Western Blotting (WB), Immunohistochemistry (IHC), Immunohistochemistry (Paraffin-embedded Sections) (IHC (p))

Product Details

Immunogen:	Full length human recombinant protein of human HES1(NP_005515) produced in HEK293T cell. Type of Immunogen: Recombinant protein
Clone:	7B9
Isotype:	IgG1
Specificity:	Human HES1
Purification:	Protein A/G purified

Target Details

Target:	HES1
Alternative Name:	HES1 / HES-1 (HES1 Products)

Target Details

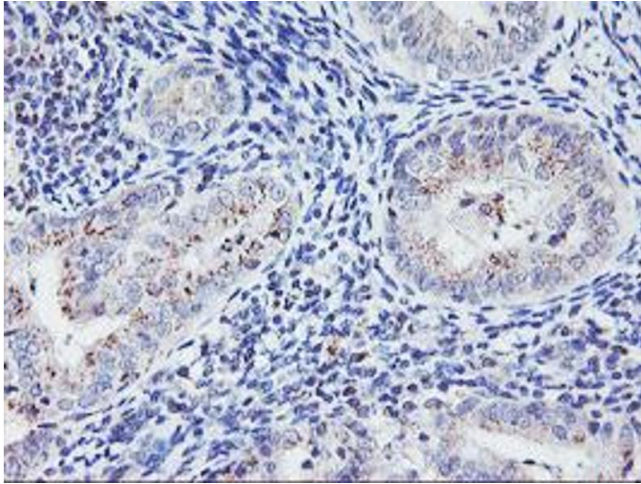
Background:	Name/Gene ID: HES1 Synonyms: HES1, BHLHb39, HHL, HL, Hairy and enhancer of split 1, Hairy homolog, HRY, Hairy homolog (Drosophila), Transcription factor HES-1, Hairy-like protein, HES-1
Gene ID:	3280
NCBI Accession:	NP_005515
UniProt:	Q14469
Pathways:	DNA Damage Repair

Application Details

Application Notes:	Approved: IHC, IHC-P (1:150), WB (1:2000)
Comment:	Target Species of Antibody: Human
Restrictions:	For Research Use only

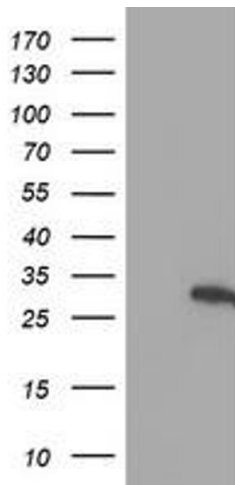
Handling

Format:	Liquid
Concentration:	Lot specific
Buffer:	PBS, pH 7.3, 1 % BSA, 50 % glycerol, 0.02 % sodium azide
Preservative:	Sodium azide
Precaution of Use:	This product contains Sodium azide: a POISONOUS AND HAZARDOUS SUBSTANCE which should be handled by trained staff only.
Handling Advice:	Minimize freezing and thawing.
Storage:	-20 °C
Storage Comment:	Store at -20°C. Avoid freeze-thaw cycles.



Immunohistochemistry

Image 1.



Western Blotting

Image 2.