

Datasheet for ABIN1498658
anti-HIBCH antibody



[Go to Product page](#)

6 Images

Overview

Quantity:	100 µL
Target:	HIBCH
Reactivity:	Human, Dog
Host:	Mouse
Clonality:	Monoclonal
Conjugate:	This HIBCH antibody is un-conjugated
Application:	Western Blotting (WB), Immunohistochemistry (IHC), Flow Cytometry (FACS), Immunohistochemistry (Paraffin-embedded Sections) (IHC (p))

Product Details

Immunogen:	Full length human recombinant protein of human HIBCH (NP_055177) produced in HEK293T cell. Type of Immunogen: Recombinant protein
Clone:	3H5
Isotype:	IgG2a
Specificity:	Human HIBCH
Purification:	Protein A/G purified

Target Details

Target:	HIBCH
---------	-------

Target Details

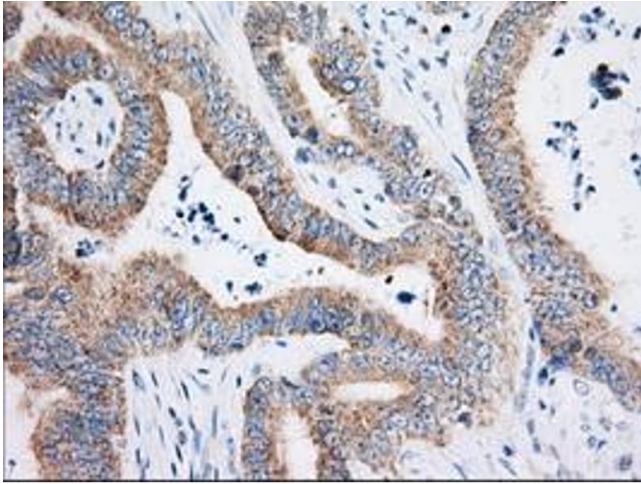
Alternative Name:	HIBCH (HIBCH Products)
Background:	Name/Gene ID: HIBCH Synonyms: HIBCH, HIB-CoA hydrolase, HIBYL-CoA-H, HIBYLCOAH
Gene ID:	26275
NCBI Accession:	NP_055177
UniProt:	Q6NVY1
Pathways:	Monocarboxylic Acid Catabolic Process

Application Details

Application Notes:	Approved: Flo (1:100), IHC, IHC-P (1:50), WB (1:1000 - 1:2000) Usage: Concentration: 0.5-1.0 mg/mL (Lot dependent)
Comment:	Target Species of Antibody: Human
Restrictions:	For Research Use only

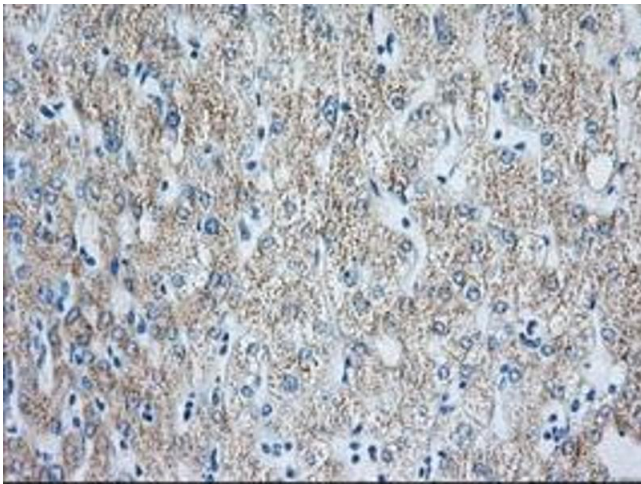
Handling

Format:	Liquid
Concentration:	Lot specific
Buffer:	PBS, pH 7.3, 1 % BSA, 50 % glycerol, 0.02 % sodium azide
Preservative:	Sodium azide
Precaution of Use:	This product contains Sodium azide: a POISONOUS AND HAZARDOUS SUBSTANCE which should be handled by trained staff only.
Handling Advice:	Minimize freezing and thawing.
Storage:	-20 °C
Storage Comment:	Store at -20°C. Avoid freeze-thaw cycles.



Immunohistochemistry

Image 1.



Immunohistochemistry

Image 2.

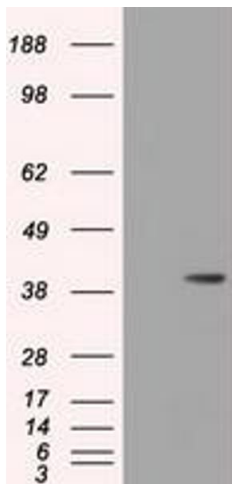


Image 3.

Please check the [product details page](#) for more images. Overall 6 images are available for ABIN1498658.