

Datasheet for ABIN1498765
anti-C20orf30 antibody



[Go to Product page](#)

3 Images

Overview

Quantity:	100 µL
Target:	C20orf30
Reactivity:	Human
Host:	Mouse
Clonality:	Monoclonal
Conjugate:	This C20orf30 antibody is un-conjugated
Application:	Western Blotting (WB), Flow Cytometry (FACS), Immunofluorescence (IF)

Product Details

Immunogen:	Full length human recombinant protein of human C20orf30(NP_054864) produced in HEK293T cell. Type of Immunogen: Recombinant protein
Clone:	2C8
Isotype:	IgG1
Specificity:	Human HSPC274 / C20orf30
Purification:	Protein A/G purified

Target Details

Target:	C20orf30
Alternative Name:	TMEM230 (C20orf30 Products)

Target Details

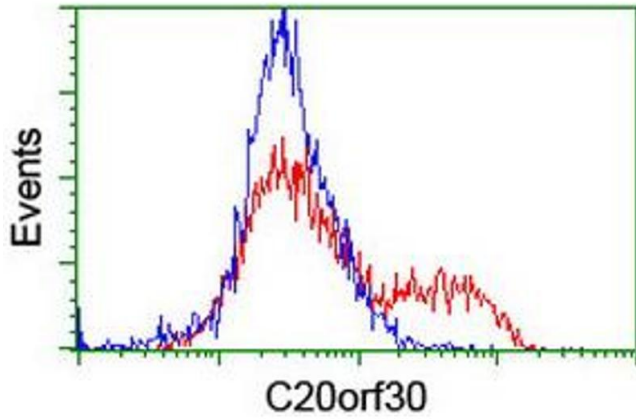
Background:	Name/Gene ID: TMEM230 Synonyms: TMEM230, C20orf30, DJ1116H23.2.1, HSPC274, Transmembrane protein 230
Gene ID:	29058
NCBI Accession:	NP_054864

Application Details

Application Notes:	Approved: Flo (1:100), IF (1:100), WB (1:2000)
Comment:	Target Species of Antibody: Human
Restrictions:	For Research Use only

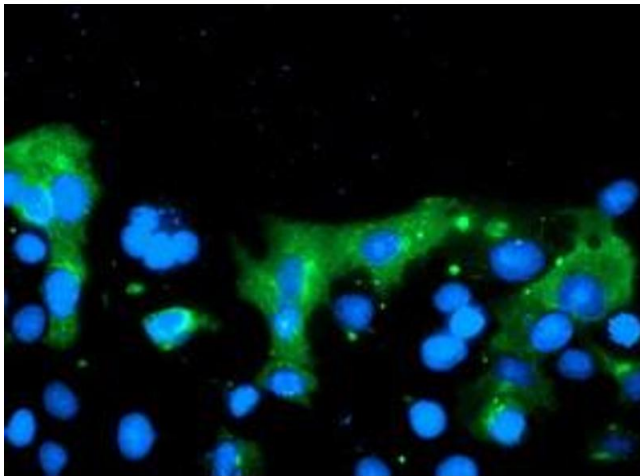
Handling

Format:	Liquid
Concentration:	Lot specific
Buffer:	PBS, pH 7.3, 1 % BSA, 50 % glycerol, 0.02 % sodium azide
Preservative:	Sodium azide
Precaution of Use:	This product contains Sodium azide: a POISONOUS AND HAZARDOUS SUBSTANCE which should be handled by trained staff only.
Storage:	-20 °C
Storage Comment:	Store at -20°C. Avoid freeze-thaw cycles.



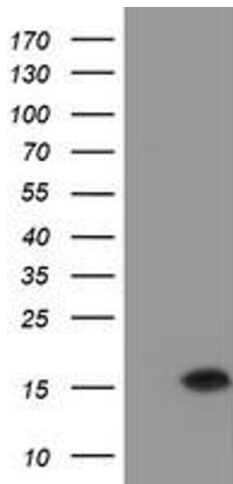
Flow Cytometry

Image 1.



Immunofluorescence

Image 2.



Western Blotting

Image 3.