

Datasheet for ABIN1498822

anti-IGF2BP2 antibody

7 Images



[Go to Product page](#)

Overview

Quantity:	100 µL
Target:	IGF2BP2
Reactivity:	Human, Monkey, Dog
Host:	Mouse
Clonality:	Monoclonal
Conjugate:	This IGF2BP2 antibody is un-conjugated
Application:	Western Blotting (WB), Immunohistochemistry (IHC), Immunofluorescence (IF), Flow Cytometry (FACS), Immunohistochemistry (Paraffin-embedded Sections) (IHC (p))

Product Details

Immunogen:	Full length human recombinant protein of human IGF2BP2 (NP_006333) produced in HEK293T cell.
	Type of Immunogen: Recombinant protein
Clone:	4C4
Isotype:	IgG1
Specificity:	Human IGF2BP2
Purification:	Protein A/G purified

Target Details

Target:	IGF2BP2
---------	---------

Target Details

Alternative Name:	IGF2BP2 (IGF2BP2 Products)
Background:	Name/Gene ID: IGF2BP2 Synonyms: IGF2BP2, IMP2, IGF2 mRNA-binding protein 2, p62, VICKZ2, IGF-II mRNA-binding protein 2, IMP-2, VICKZ family member 2
Gene ID:	10644
NCBI Accession:	NP_006333
UniProt:	Q9Y6M1

Application Details

Application Notes:	Approved: Flo (1:100), IF (1:100), IHC, IHC-P (1:50), WB (1:1000 - 1:2000)
Comment:	Target Species of Antibody: Human
Restrictions:	For Research Use only

Handling

Format:	Liquid
Concentration:	Lot specific
Buffer:	PBS, pH 7.3, 1 % BSA, 50 % glycerol, 0.02 % sodium azide
Preservative:	Sodium azide
Precaution of Use:	This product contains Sodium azide: a POISONOUS AND HAZARDOUS SUBSTANCE which should be handled by trained staff only.
Handling Advice:	Minimize freezing and thawing.
Storage:	-20 °C
Storage Comment:	Store at -20°C. Avoid freeze-thaw cycles.

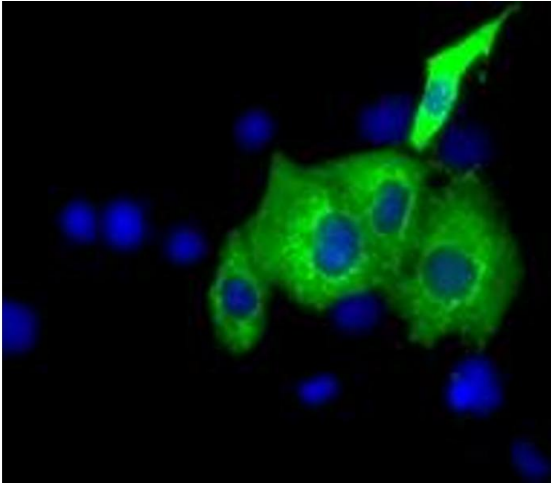
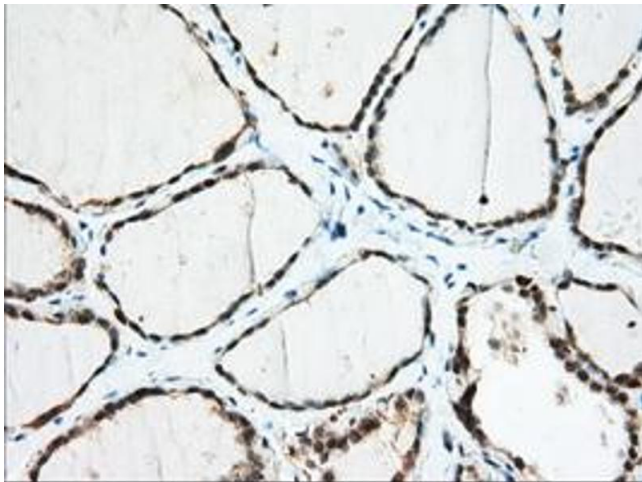
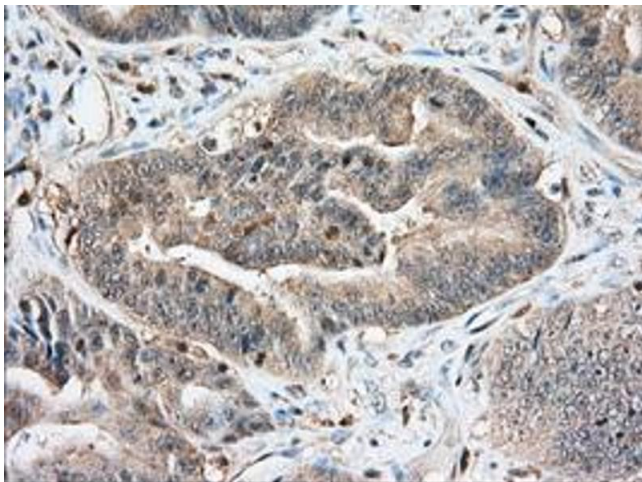


Image 1.



Immunohistochemistry

Image 2.



Immunohistochemistry

Image 3.

Please check the [product details page](#) for more images. Overall 7 images are available for ABIN1498822.