



[Go to Product page](#)

Datasheet for ABIN1498905
anti-IRF9 antibody (AA 171-393)

3 Images

Overview

Quantity:	100 µL
Target:	IRF9
Binding Specificity:	AA 171-393
Reactivity:	Human
Host:	Rabbit
Clonality:	Polyclonal
Conjugate:	This IRF9 antibody is un-conjugated
Application:	Western Blotting (WB), Immunohistochemistry (IHC), Immunofluorescence (IF), Immunohistochemistry (Paraffin-embedded Sections) (IHC (p)), Immunocytochemistry (ICC)

Product Details

Immunogen:	Recombinant fragment corresponding to a region within amino acids 171 and 393 of IRF9 (SwissProt Q00978). Percent identity by BLAST analysis: Human (100%), Bovine (84%), Mouse (81%). Type of Immunogen: Recombinant protein
Isotype:	IgG
Specificity:	Human IRF9
Predicted Reactivity:	Percent identity by BLAST analysis: Human (100%) Bovine (84%) Mouse (81%).
Purification:	Immunoaffinity purified

Target Details

Target:	IRF9
Alternative Name:	ISGF3 / IRF9 (IRF9 Products)
Background:	Name/Gene ID: IRF9 Synonyms: IRF9, Interferon regulatory factor 9, ISGF3 p48 subunit, ISGF3G, p48, IRF-9, ISGF3, ISGF-3 gamma
Gene ID:	10379
UniProt:	Q00978
Pathways:	JAK-STAT Signaling , Interferon-gamma Pathway , Hepatitis C

Application Details

Application Notes:	Approved: ICC (1:100 - 1:1000), IF (1:100 - 1:1000), IHC, IHC-P (1:100 - 1:1000), WB (1:1000 - 1:10000) Usage: Suggested starting dilutions are as follows: Western blot: 1:1000-1:10000, IHC-Paraffin: 1:100-1:1000 [suggested antigen retrieval using heat mediated 10 mM Citrate buffer (pH 6.0) or Tris-EDTA buffer (pH 8.0)], ICC/IF: 1:100-1:1000. Not yet tested in other applications. Optimal working dilutions should be determined experimentally by the end user.
Comment:	Target Species of Antibody: Human
Restrictions:	For Research Use only

Handling

Format:	Liquid
Concentration:	Lot specific
Buffer:	0.1 M Tris-glycine, pH 7, 20 % Glycerol, 0.01 % Thimerosal
Preservative:	Thimerosal (Merthiolate)
Precaution of Use:	This product contains Thimerosal (Merthiolate): a POISONOUS AND HAZARDOUS SUBSTANCE which should be handled by trained staff only.
Handling Advice:	Avoid freeze-thaw cycles.
Storage:	-20 °C

Handling

Storage Comment: Aliquot and freeze at -20°C. Avoid freeze-thaw cycles.

Images

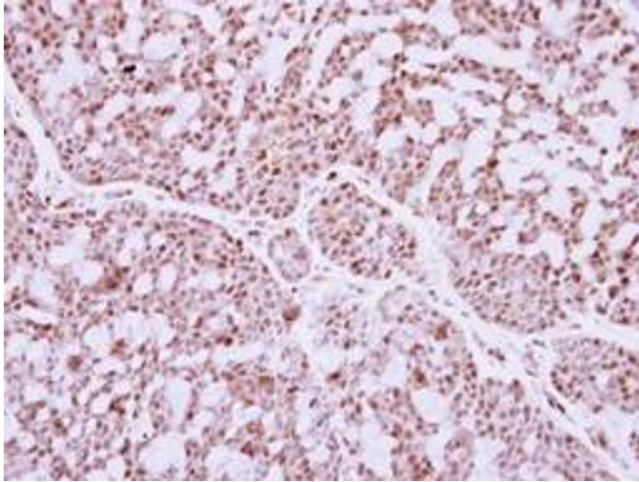
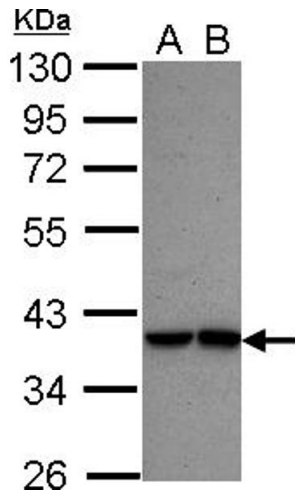


Image 1.



Western Blotting

Image 2.

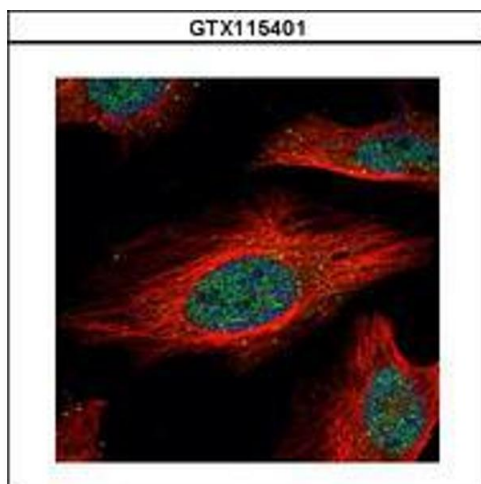


Image 3.