

Datasheet for ABIN1499016

## anti-KEAP1 antibody

### 8 Images



[Go to Product page](#)

### Overview

Quantity:	100 µL
Target:	KEAP1
Reactivity:	Human, Mouse
Host:	Mouse
Clonality:	Monoclonal
Application:	Western Blotting (WB), Immunohistochemistry (IHC), Immunohistochemistry (Paraffin-embedded Sections) (IHC (p)), Flow Cytometry (FACS)

### Product Details

Immunogen:	Full length human recombinant protein of human KEAP1(NP_987096) produced in HEK293T cell. Type of Immunogen: Recombinant protein
Clone:	1B4
Isotype:	IgG1
Specificity:	Human KEAP1
Purification:	Protein A/G purified

### Target Details

Target:	KEAP1
Alternative Name:	KEAP1 ( <a href="#">KEAP1 Products</a> )

## Target Details

---

Background:	Name/Gene ID: KEAP1
	Synonyms: KEAP1, Cytosolic inhibitor of Nrf2, INrf2, KLHL19, Kelch-like protein 19, KIAA0132
Gene ID:	9817
NCBI Accession:	<a href="#">NP_987096</a>
Pathways:	<a href="#">Maintenance of Protein Location</a>

## Application Details

---

Application Notes:	Approved: Flo (1:100), IHC, IHC-P (1:150), WB (1:500 - 1:2000)
Comment:	Target Species of Antibody: Human
Restrictions:	For Research Use only

## Handling

---

Format:	Liquid
Concentration:	Lot specific
Buffer:	PBS, pH 7.3, 1 % BSA, 50 % glycerol, 0.02 % sodium azide
Preservative:	Sodium azide
Precaution of Use:	This product contains Sodium azide: a POISONOUS AND HAZARDOUS SUBSTANCE which should be handled by trained staff only.
Storage:	-20 °C
Storage Comment:	Store at -20°C. Avoid freeze-thaw cycles.

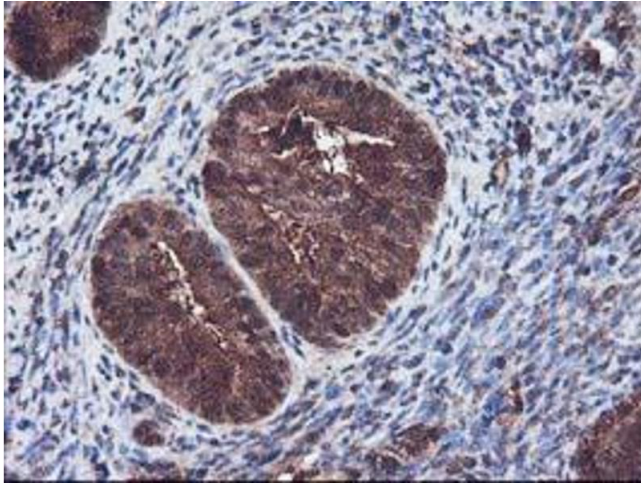
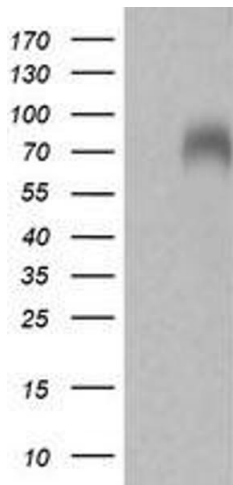


Image 1.



### Western Blotting

Image 2.

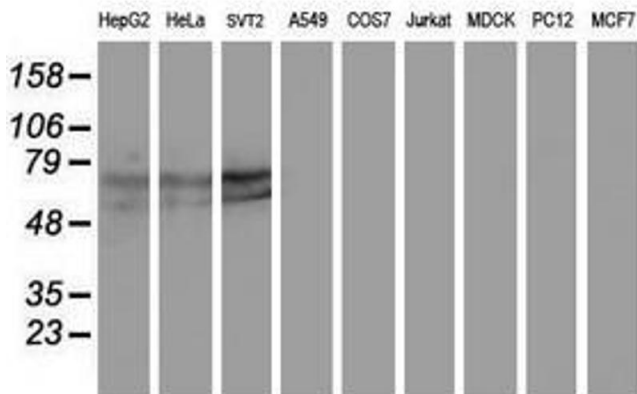


Image 3.

Please check the [product details page](#) for more images. Overall 8 images are available for ABIN1499016.