



[Go to Product page](#)

Datasheet for ABIN1499117  
**anti-LEMD3 antibody**

7 Images

Overview

Quantity:	100 µL
Target:	LEMD3
Reactivity:	Human, Monkey, Dog
Host:	Mouse
Clonality:	Monoclonal
Conjugate:	This LEMD3 antibody is un-conjugated
Application:	Western Blotting (WB), Immunofluorescence (IF), Flow Cytometry (FACS), Immunohistochemistry (IHC), Immunohistochemistry (Paraffin-embedded Sections) (IHC (p))

Product Details

Immunogen:	Full length human recombinant protein of human LEMD3 (NP_055134) produced in HEK293T cell.  Type of Immunogen: Recombinant protein
Clone:	6C10
Isotype:	IgG1
Specificity:	Human LEMD3 / MAN1
Purification:	Protein A/G purified

Target Details

Target:	LEMD3
---------	-------

## Target Details

---

Alternative Name:	LEMD3 / MAN1 ( <a href="#">LEMD3 Products</a> )
Background:	Name/Gene ID: LEMD3  Synonyms: LEMD3, MAN1, LEM domain containing 3
Gene ID:	23592
NCBI Accession:	<a href="#">NP_055134</a>
UniProt:	<a href="#">Q9Y2U8</a>

## Application Details

---

Application Notes:	Approved: Flo (1:100), IF (1:100), IHC, IHC-P (1:50), WB (1:1000)  Usage: Concentration: 0.5-1.0 mg/mL (Lot dependent)
Comment:	Target Species of Antibody: Human
Restrictions:	For Research Use only

## Handling

---

Format:	Liquid
Concentration:	Lot specific
Buffer:	PBS, pH 7.3, 1 % BSA, 50 % glycerol, 0.02 % sodium azide
Preservative:	Sodium azide
Precaution of Use:	This product contains Sodium azide: a POISONOUS AND HAZARDOUS SUBSTANCE which should be handled by trained staff only.
Handling Advice:	Minimize freezing and thawing.
Storage:	-20 °C
Storage Comment:	Store at -20°C. Avoid freeze-thaw cycles.

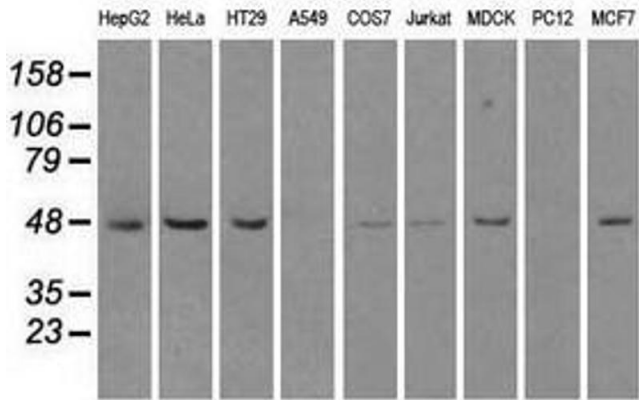


Image 1.

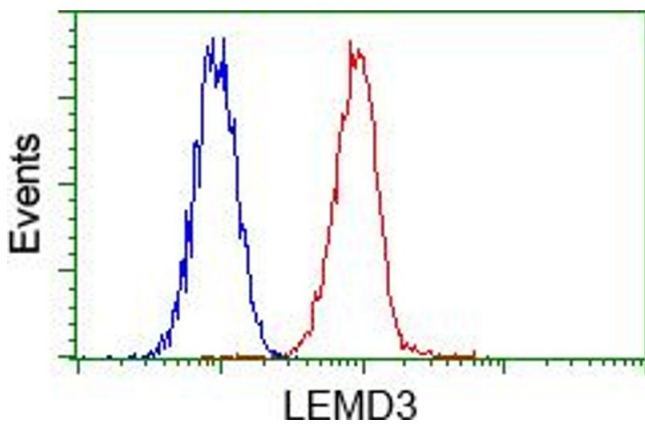


Image 2.

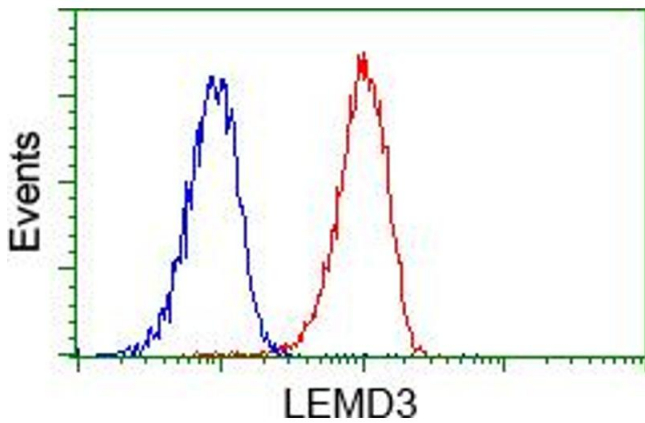


Image 3.

Please check the [product details page](#) for more images. Overall 7 images are available for ABIN1499117.