



Datasheet for ABIN1499129
anti-LEPRE1 antibody



[Go to Product page](#)

3 Images

Overview

Quantity:	100 µL
Target:	LEPRE1
Reactivity:	Human
Host:	Mouse
Clonality:	Monoclonal
Application:	Western Blotting (WB), Immunohistochemistry (IHC), Flow Cytometry (FACS), Immunohistochemistry (Paraffin-embedded Sections) (IHC (p))

Product Details

Immunogen:	Full length human recombinant protein of human LEPRE1(NP_071751) produced in HEK293T cell. Type of Immunogen: Recombinant protein
Clone:	1A1
Isotype:	IgG1
Specificity:	Human LEPRE1
Purification:	Protein A/G purified

Target Details

Target:	LEPRE1
Alternative Name:	LEPRE1 (LEPRE1 Products)

Target Details

Background:	Name/Gene ID: P3H1 Synonyms: P3H1, Growth suppressor 1, Leprecan-1, GROS1, LEPRECAN, OI8, p3H1, LEPRE1, Prolyl 3-hydroxylase 1
Gene ID:	64175
NCBI Accession:	NP_071751
UniProt:	Q32P28

Application Details

Application Notes:	Approved: Flo (1:100), IHC, IHC-P (1:150), WB (1:2000)
Comment:	Target Species of Antibody: Human
Restrictions:	For Research Use only

Handling

Format:	Liquid
Concentration:	Lot specific
Buffer:	PBS, pH 7.3, 1 % BSA, 50 % glycerol, 0.02 % sodium azide
Preservative:	Sodium azide
Precaution of Use:	This product contains Sodium azide: a POISONOUS AND HAZARDOUS SUBSTANCE which should be handled by trained staff only.
Handling Advice:	Minimize freezing and thawing.
Storage:	-20 °C
Storage Comment:	Store at -20°C. Avoid freeze-thaw cycles.

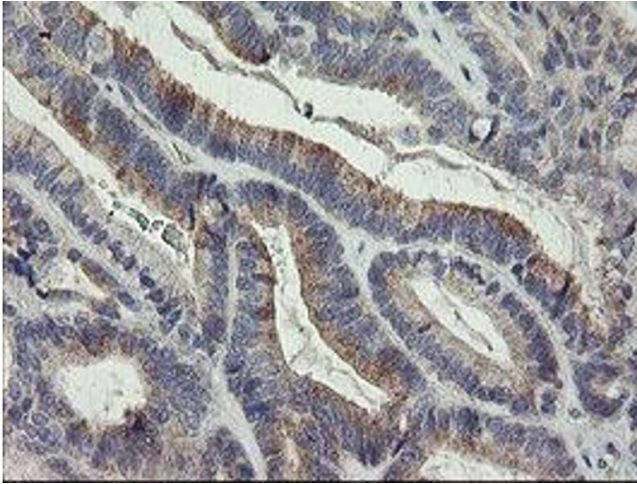


Image 1.

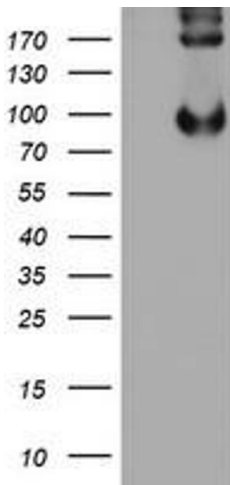


Image 2.

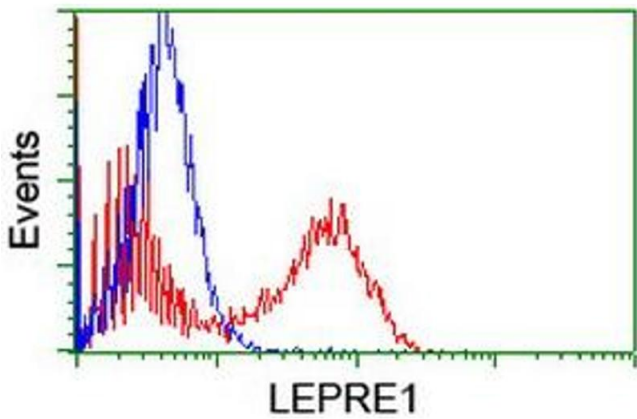


Image 3.