



[Go to Product page](#)

Datasheet for ABIN1499162

## anti-LIPG antibody

### 7 Images

#### Overview

Quantity:	100 µL
Target:	LIPG
Reactivity:	Human
Host:	Mouse
Clonality:	Monoclonal
Conjugate:	This LIPG antibody is un-conjugated
Application:	Western Blotting (WB), Immunohistochemistry (IHC), Immunofluorescence (IF), Immunoprecipitation (IP), Flow Cytometry (FACS), Immunohistochemistry (Paraffin-embedded Sections) (IHC (p))

#### Product Details

Immunogen:	Full length human recombinant protein of human LIPG (NP_006024) produced in HEK293T cell. Type of Immunogen: Recombinant protein
Clone:	7C2
Isotype:	IgG1
Specificity:	Human LIPG / Endothelial Lipase
Purification:	Protein A/G purified

#### Target Details

Target:	LIPG
---------	------

## Target Details

---

Alternative Name:	LIPG / Endothelial Lipase ( <a href="#">LIPG Products</a> )
Background:	Name/Gene ID: LIPG  Synonyms: LIPG, EDL, EL, Lipoprotein lipase H, Lipase, endothelial, PRO719, Endothelial lipase
Gene ID:	9388
NCBI Accession:	<a href="#">NP_006024</a>
UniProt:	<a href="#">Q9Y5X9</a>

## Application Details

---

Application Notes:	Approved: Flo (1:100), IF (1:100), IHC, IHC-P (1:50), IP, WB (1:1000)  Usage: Concentration: 0.5-1.0 mg/mL (Lot dependent)
Comment:	Target Species of Antibody: Human
Restrictions:	For Research Use only

## Handling

---

Format:	Liquid
Concentration:	Lot specific
Buffer:	PBS, pH 7.3, 1 % BSA, 50 % glycerol, 0.02 % sodium azide
Preservative:	Sodium azide
Precaution of Use:	This product contains Sodium azide: a POISONOUS AND HAZARDOUS SUBSTANCE which should be handled by trained staff only.
Handling Advice:	Minimize freezing and thawing.
Storage:	-20 °C
Storage Comment:	Store at -20°C. Avoid freeze-thaw cycles.

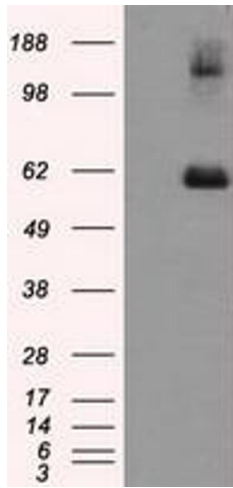


Image 1.

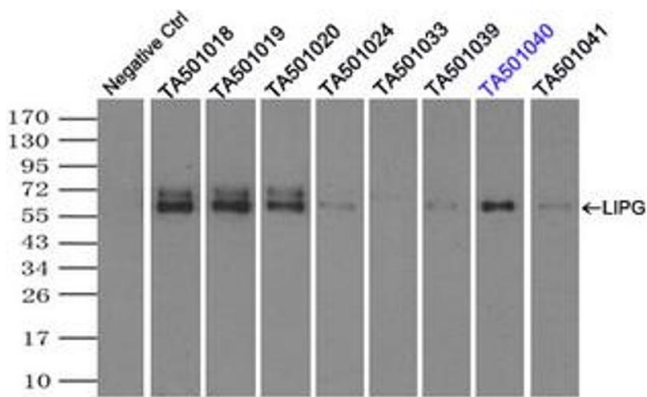


Image 2.

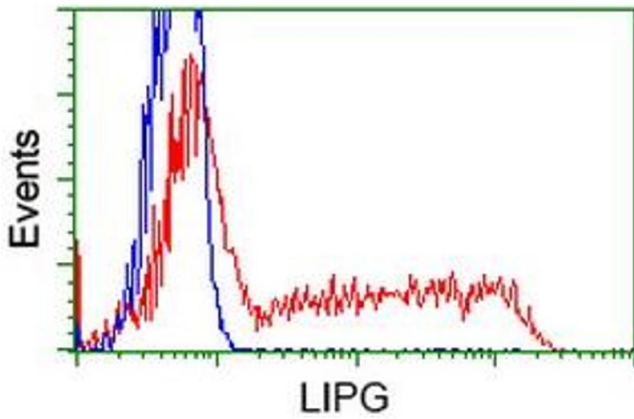


Image 3.

Please check the [product details page](#) for more images. Overall 7 images are available for ABIN1499162.