



[Go to Product page](#)

Datasheet for ABIN1499191

anti-LPAR1 antibody

3 Images

Overview

Quantity:	100 µL
Target:	LPAR1
Reactivity:	Human
Host:	Mouse
Clonality:	Monoclonal
Conjugate:	This LPAR1 antibody is un-conjugated
Application:	Western Blotting (WB), Immunofluorescence (IF), Flow Cytometry (FACS)

Product Details

Immunogen:	Full length human recombinant protein of human LPAR1(NP_001392) produced in HEK293T cell. Type of Immunogen: Recombinant protein
Clone:	1G6
Isotype:	IgG2b
Specificity:	Human LPA1 / EDG2
Purification:	Protein A/G purified

Target Details

Target:	LPAR1
Alternative Name:	LPAR1 / LPA1 / EDG2 (LPAR1 Products)

Target Details

Background: Name/Gene ID: LPAR1
Subfamily: Lysophospholipid/Lysosphingolipid
Family: GPCR

Synonyms: LPAR1, EDG-2, EDG2, Gpcr26, Rec.1.3, Vzg-1, Ventricular zone gene 1, LPA receptor 1, LPA-1, LPA1, Mrec1.3, VZG1

Gene ID: 1902

NCBI Accession: [NP_001392](#)

Pathways: [Myometrial Relaxation and Contraction](#), [Smooth Muscle Cell Migration](#)

Application Details

Application Notes: Approved: Flo (1:100), IF (1:100), WB (1:2000)

Comment: Target Species of Antibody: Human

Restrictions: For Research Use only

Handling

Format: Liquid

Concentration: Lot specific

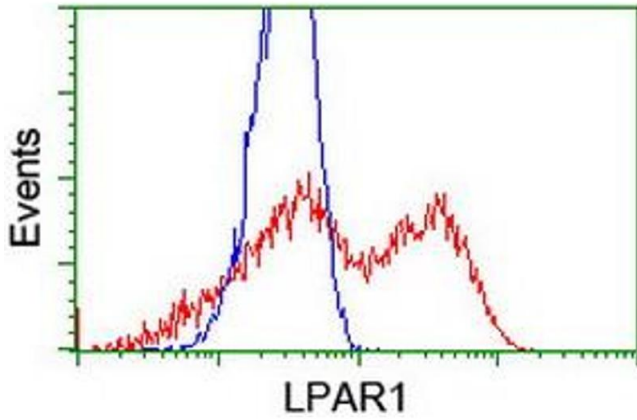
Buffer: PBS, pH 7.3, 1 % BSA, 50 % glycerol, 0.02 % sodium azide

Preservative: Sodium azide

Precaution of Use: This product contains Sodium azide: a POISONOUS AND HAZARDOUS SUBSTANCE which should be handled by trained staff only.

Storage: -20 °C

Storage Comment: Store at -20°C. Avoid freeze-thaw cycles.



Flow Cytometry

Image 1.

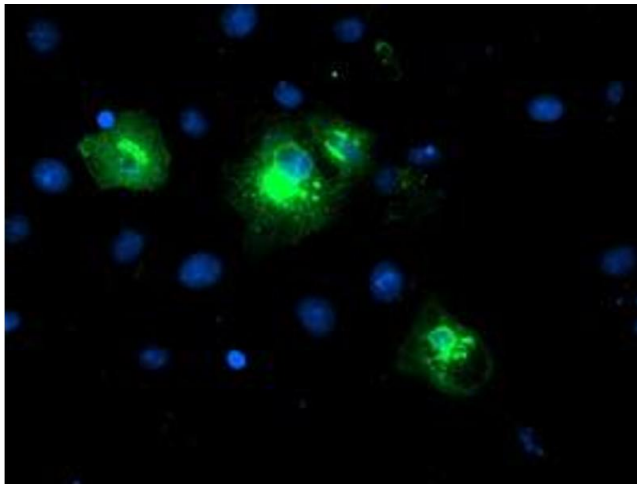
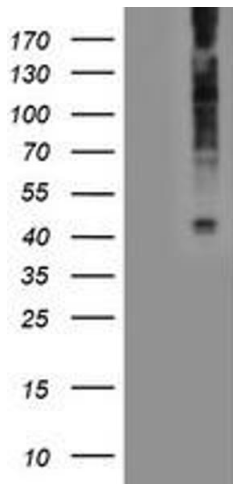


Image 2.



Western Blotting

Image 3.