



[Go to Product page](#)

Datasheet for ABIN1499196  
**anti-LRRC1 antibody (AA 265-524)**

2 Images

Overview

Quantity:	100 µL
Target:	LRRC1
Binding Specificity:	AA 265-524
Reactivity:	Human
Host:	Rabbit
Clonality:	Polyclonal
Conjugate:	This LRRC1 antibody is un-conjugated
Application:	Western Blotting (WB), Immunohistochemistry (IHC), Immunohistochemistry (Paraffin-embedded Sections) (IHC (p))

Product Details

Immunogen:	Recombinant fragment corresponding to a region within amino acids 265 and 524 of LRRC1 (SwissProt Q9BTT6). Percent identity by BLAST analysis: Human (100%), Bovine (91%), Mouse (87%).  Type of Immunogen: Recombinant protein
Isotype:	IgG
Specificity:	Human LRRC1 / LANO
Predicted Reactivity:	Percent identity by BLAST analysis: Human (100%) Bovine (91%) Mouse (87%).
Purification:	Immunoaffinity purified

## Target Details

---

Target:	LRRC1
Alternative Name:	LANO / LRRC1 ( <a href="#">LRRC1 Products</a> )
Background:	Name/Gene ID: LRRC1  Synonyms: LRRC1, LAP and no PDZ protein, LANO adapter protein, DJ523E19.1, LANO
Gene ID:	55227
UniProt:	<a href="#">Q9BTT6</a>

## Application Details

---

Application Notes:	Approved: IHC, IHC-P (1:100 - 1:1000), WB (1:500 - 1:3000)  Usage: Suggested starting dilutions are as follows: Western blot: 1:500-1:3000, IHC-Paraffin: 1:100-1:1000 [suggested antigen retrieval using heat mediated 10 mM Citrate buffer ( pH 6.0) or Tris-EDTA buffer ( pH 8.0)]. Not yet tested in other applications. Optimal working dilutions should be determined experimentally by the end user.
Comment:	Target Species of Antibody: Human
Restrictions:	For Research Use only

## Handling

---

Format:	Liquid
Concentration:	Lot specific
Buffer:	PBS, pH 7, 1 % BSA, 20 % Glycerol, 0.01 % Thimerosal
Preservative:	Thimerosal (Merthiolate)
Precaution of Use:	This product contains Thimerosal (Merthiolate): a POISONOUS AND HAZARDOUS SUBSTANCE which should be handled by trained staff only.
Handling Advice:	Avoid freeze-thaw cycles.
Storage:	-20 °C
Storage Comment:	Aliquot and freeze at -20°C. Avoid freeze-thaw cycles.

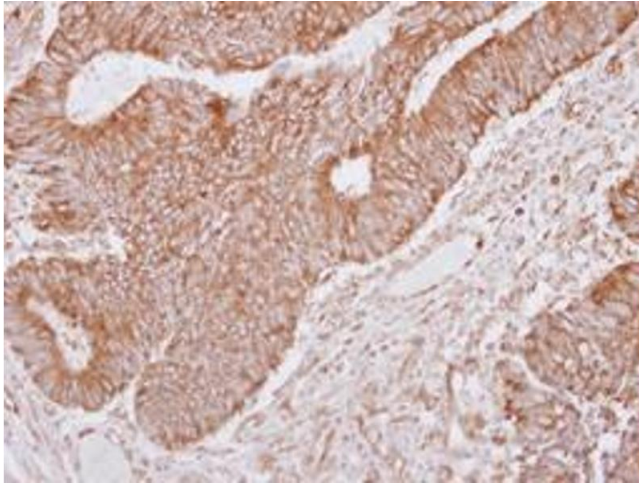


Image 1.

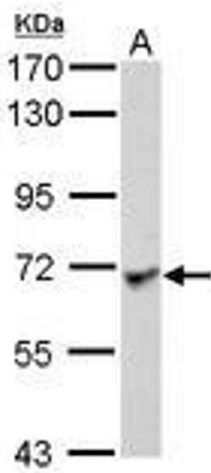


Image 2.