



## Datasheet for ABIN1499197 **anti-LRRC23 antibody (AA 52-237)**



[Go to Product page](#)

### 1 Image

#### Overview

Quantity:	100 µL
Target:	LRRC23
Binding Specificity:	AA 52-237
Reactivity:	Human
Host:	Rabbit
Clonality:	Polyclonal
Conjugate:	This LRRC23 antibody is un-conjugated
Application:	Western Blotting (WB)

#### Product Details

Immunogen:	Recombinant protein fragment contain a sequence corresponding to a region within amino acids 52 and 237 (Q5GH73) of LRRC23. Percent identity by BLAST analysis: Human (100%), Bovine (89%), Mouse (84%), Rat (82%).  Type of Immunogen: Recombinant protein
Isotype:	IgG
Specificity:	Human LRRC23
Predicted Reactivity:	Percent identity by BLAST analysis: Human (100%) Bovine (89%) Mouse (84%) Rat (82%).
Purification:	Immunoaffinity purified

## Target Details

---

Target:	LRRC23
Alternative Name:	LRPB7 / LRRC23 ( <a href="#">LRRC23 Products</a> )
Background:	Name/Gene ID: LRRC23  Synonyms: LRRC23, B7, Leucine-rich protein B7, LRPB7
Gene ID:	10233
UniProt:	<a href="#">Q53EV4</a>

## Application Details

---

Application Notes:	Approved: WB (1:500 - 1:3000)  Usage: Suggested starting dilutions are as follows: Western blot: 1:500-1:3000. Not yet tested in other applications. Optimal working dilutions should be determined experimentally by the end user.
Comment:	Target Species of Antibody: Human
Restrictions:	For Research Use only

## Handling

---

Format:	Liquid
Concentration:	Lot specific
Buffer:	0.1 M Tris-glycine, pH 7, 20 % Glycerol, 0.01 % Thimerosal
Preservative:	Thimerosal (Merthiolate)
Precaution of Use:	This product contains Thimerosal (Merthiolate): a POISONOUS AND HAZARDOUS SUBSTANCE which should be handled by trained staff only.
Handling Advice:	Avoid freeze-thaw cycles.
Storage:	-20 °C
Storage Comment:	Aliquot and freeze at -20°C. Avoid freeze-thaw cycles.

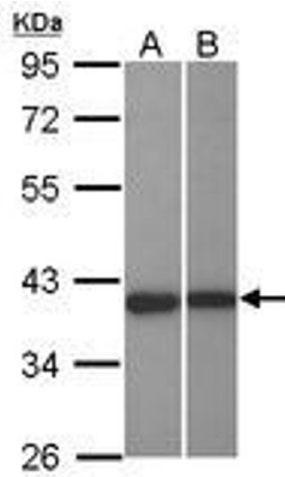


Image 1.