



[Go to Product page](#)

Datasheet for ABIN1499204

anti-LRRC4C antibody (AA 410-640)

1 Image

Overview

Quantity:	100 µL
Target:	LRRC4C
Binding Specificity:	AA 410-640
Reactivity:	Human
Host:	Rabbit
Clonality:	Polyclonal
Conjugate:	This LRRC4C antibody is un-conjugated
Application:	Western Blotting (WB)

Product Details

Immunogen:	Recombinant fragment corresponding to a region within amino acids 410 and 640 of Netrin G1 ligand (SwissProt Q9HCJ2). Percent identity by BLAST analysis: Human (100%), Mouse, Rat (99%). Type of Immunogen: Recombinant protein
Isotype:	IgG
Specificity:	Human LRRC4C
Predicted Reactivity:	Percent identity by BLAST analysis: Human (100%) Mouse, Rat (99%).
Purification:	Immunoaffinity purified

Target Details

Target: LRRC4C

Alternative Name: LRRC4C ([LRRC4C Products](#))

Background: Name/Gene ID: LRRC4C

Synonyms: LRRC4C, KIAA1580, Netrin-G1 ligand, NGL1, NGL-1

Gene ID: 57689

UniProt: [Q9HCJ2](#)

Pathways: [Synaptic Membrane](#)

Application Details

Application Notes: Approved: WB (1:500 - 1:3000)

Usage: Suggested starting dilutions are as follows: Western blot: 1:500-1:3000. Not yet tested in other applications. Optimal working dilutions should be determined experimentally by the end user.

Comment: Target Species of Antibody: Human

Restrictions: For Research Use only

Handling

Format: Liquid

Concentration: Lot specific

Buffer: 0.1 M Tris-glycine, pH 7, 20 % Glycerol, 0.01 % Thimerosal

Preservative: Thimerosal (Merthiolate)

Precaution of Use: This product contains Thimerosal (Merthiolate): a POISONOUS AND HAZARDOUS SUBSTANCE which should be handled by trained staff only.

Handling Advice: Avoid freeze-thaw cycles.

Storage: -20 °C

Storage Comment: Aliquot and freeze at -20°C. Avoid freeze-thaw cycles.

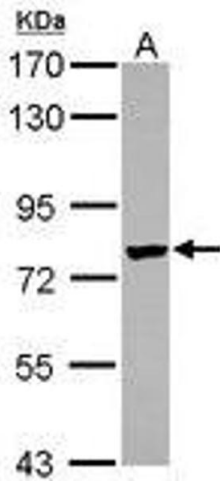


Image 1.