

Datasheet for ABIN1499293

anti-ERK2 antibody

6 Images



[Go to Product page](#)

Overview

Quantity:	100 µL
Target:	ERK2 (MAPK1)
Reactivity:	Human, Rat, Dog, Monkey
Host:	Mouse
Clonality:	Monoclonal
Conjugate:	This ERK2 antibody is un-conjugated
Application:	Western Blotting (WB), Immunohistochemistry (IHC), Immunohistochemistry (Paraffin-embedded Sections) (IHC (p))

Product Details

Immunogen:	Protein expressed in 293T cell transfected with human MAPK1 expression vector. Type of Immunogen: Transfected Cells
Clone:	9H1
Isotype:	IgG2a
Specificity:	Human MAPK1 / ERK2
Purification:	Protein A/G purified

Target Details

Target:	ERK2 (MAPK1)
Alternative Name:	MAPK1 / ERK2 / p42 (MAPK1 Products)

Target Details

Background:	Name/Gene ID: MAPK1 Subfamily: MAPK Family: Protein Kinase Synonyms: MAPK1, ERK, ERK-2, ERK2, MAP kinase 1, MAPK 2, MAPK2, MAP kinase isoform p42, MAPK 1, p41mapk, PRKM2, MAP kinase 2, p41, p42-MAPK, PRKM1, ERT1, p38, p40, p42MAPK, Protein tyrosine kinase ERK2
Gene ID:	5594
UniProt:	P28482
Pathways:	MAPK Signaling , RTK Signaling , Apoptosis , Interferon-gamma Pathway , Fc-epsilon Receptor Signaling Pathway , Response to Growth Hormone Stimulus , Activation of Innate immune Response , Cellular Response to Molecule of Bacterial Origin , Hepatitis C , Protein targeting to Nucleus , Toll-Like Receptors Cascades , Monocarboxylic Acid Catabolic Process , Autophagy , G-protein mediated Events , Signaling Events mediated by VEGFR1 and VEGFR2 , Signaling of Hepatocyte Growth Factor Receptor , VEGFR1 Specific Signals , BCR Signaling , S100 Proteins

Application Details

Application Notes:	Approved: IHC, IHC-P (1:50), WB Usage: Concentration: 0.5-1.0 mg/mL (Lot dependent)
Comment:	Target Species of Antibody: Human
Restrictions:	For Research Use only

Handling

Format:	Liquid
Concentration:	Lot specific
Buffer:	PBS, pH 7.3, 1 % BSA, 50 % glycerol, 0.02 % sodium azide
Preservative:	Sodium azide
Precaution of Use:	This product contains Sodium azide: a POISONOUS AND HAZARDOUS SUBSTANCE which should be handled by trained staff only.
Handling Advice:	Minimize freezing and thawing.

Handling

Storage: -20 °C

Storage Comment: Store at -20°C. Avoid freeze-thaw cycles.

Images

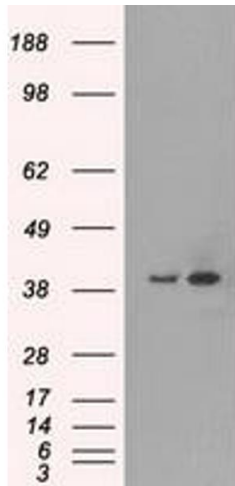


Image 1.

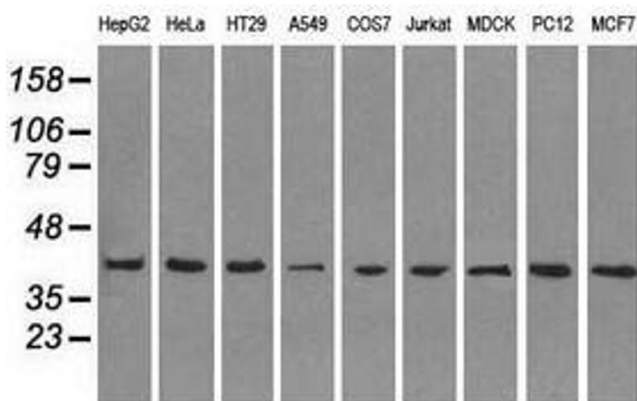


Image 2.

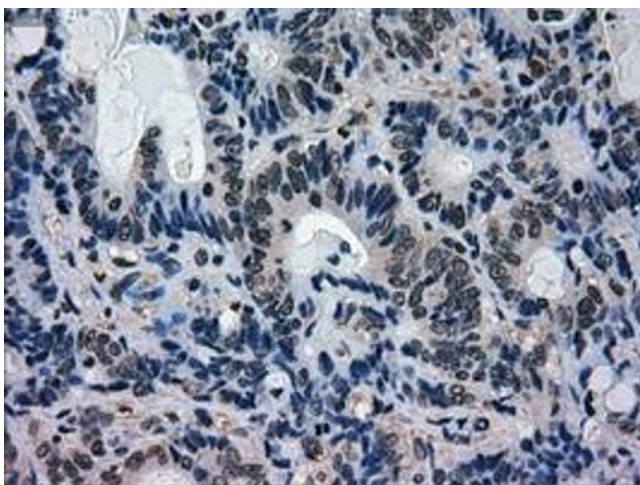


Image 3.

Please check the [product details page](#) for more images. Overall 6 images are available for ABIN1499293.