

Datasheet for ABIN1499321
anti-MAPRE2 antibody



[Go to Product page](#)

6 Images

Overview

Quantity:	100 µL
Target:	MAPRE2
Reactivity:	Human, Rat, Dog, Monkey
Host:	Mouse
Clonality:	Monoclonal
Conjugate:	This MAPRE2 antibody is un-conjugated
Application:	Western Blotting (WB), Immunofluorescence (IF), Flow Cytometry (FACS)

Product Details

Immunogen:	Full length human recombinant protein of human MAPRE2 (NP_055083) produced in HEK293T cell. Type of Immunogen: Recombinant protein
Clone:	3C7
Isotype:	IgG2b
Specificity:	Human MAPRE2 / EB2
Purification:	Protein A/G purified

Target Details

Target:	MAPRE2
Alternative Name:	MAPRE2 / EB2 (MAPRE2 Products)

Target Details

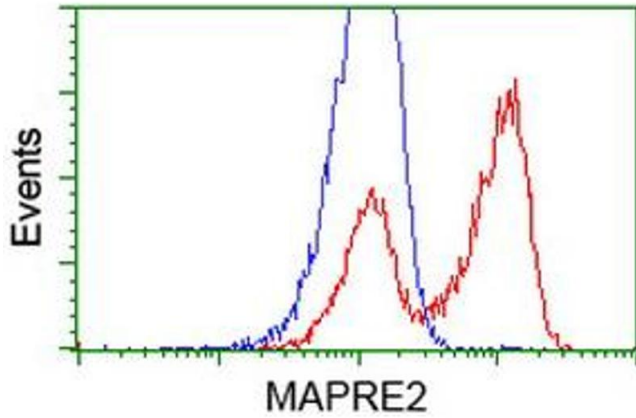
Background:	Name/Gene ID: MAPRE2 Synonyms: MAPRE2, APC-binding protein EB2, APC-binding protein EB1, EB1, EB2, End-binding protein 2
Gene ID:	10982
NCBI Accession:	NP_055083

Application Details

Application Notes:	Approved: Flo (1:100), IF (1:100), WB (1:500 - 1:2000)
Comment:	Target Species of Antibody: Human
Restrictions:	For Research Use only

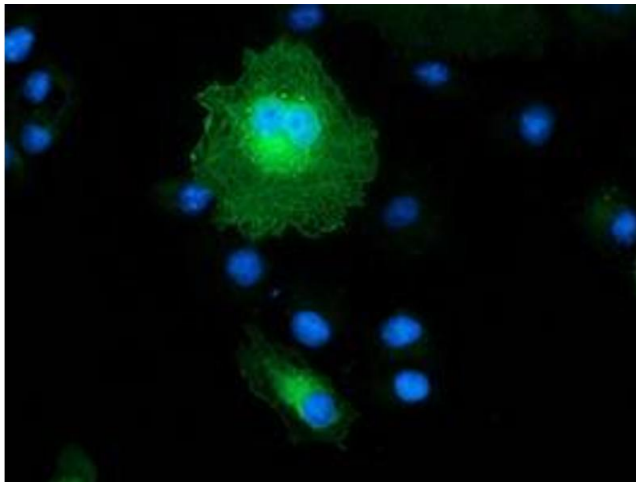
Handling

Format:	Liquid
Concentration:	Lot specific
Buffer:	PBS, pH 7.3, 1 % BSA, 50 % glycerol, 0.02 % sodium azide
Preservative:	Sodium azide
Precaution of Use:	This product contains Sodium azide: a POISONOUS AND HAZARDOUS SUBSTANCE which should be handled by trained staff only.
Storage:	-20 °C
Storage Comment:	Store at -20°C. Avoid freeze-thaw cycles.



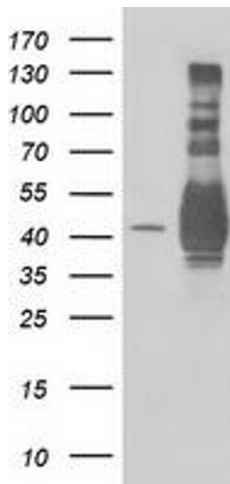
Flow Cytometry

Image 1.



Immunofluorescence

Image 2.



Western Blotting

Image 3.

Please check the [product details page](#) for more images. Overall 6 images are available for ABIN1499321.